

SUNFLEX RMD300 RED MULTI

SUNFLEX RAWY200 EAGLE

SUNFLEX AWB150

SUNFLEX ODH150

BER RBM230 BEVERAGE MASTER

SUNFLEX RCS240 CHEMI

SUNWAY[®]
TR TOTAL RUBBER

SUNFLEX INDUSTRIAL RUBBER HOSE CATALOGUE



“THERE’S ONLY ONE WAY AND THAT’S SUNWAY”

2023 Volume 1. Version 1

SUNFLEX SPECIALTY HAND BUILT RUBBER HOSE MANUFACTURING



We custom build hose assemblies, each hose is designed for the customers unique application. Only the highest quality materials are used in the construction of these hose assemblies. Rubber compounds are selected to produce the best performance for each application

Sizes range from 4" to 36" in diameter and up to 20 meters continuous length. Capability to 40 bar WP are available with standard 10 bar WP assemblies in stock. Both soft wall delivery hoses or hard wall with wire helix for suction are available. We specialise in corrugated exterior hoses to give maximum flexibility.



Integrally (built in) flanges are designed into the hose construction to ensure obstruction free full flow. Plain ends and also cuffed ends are available.



Rubber expansion joints in sizes 6" through to 32" with working pressure up to 20 bar. Preformed bends are also manufactured to order in sizes above 6" ID.



Table of Contents

AIR & WATER

RMD300	Red Multipurpose	6
RAWY200	Eagle Air Water	6
RMSH300	Multiserviz	7
RAWY300	TPR Air & Water	7
RAWB150	10 Bar Air & Water	8
RAWB300	20 Bar Air & Water Black	8
RAWY300	20 Bar Air & Water Yellow	9
RAWF300	FRAS Air & Water (AS2660)	9
RAH600	40 Bar Air/Water	10
R2HT	Ultimate Drill Rig	10
RWSD150	Water Suction	11
RWSDF150	FRAS Water Suction	11
RWSC150	Contractors Suction	12
RSDW150	Dewatering Solutions	12
RFCT070	FRAS Cable Trailing	13
RHAB090	Hot Air Blower Hose	13
RWHW300	White Hot Wash	14
RWFG150	Multi-Thor Hot Wash	14
RCHH100	Car Heater Hose	15
RAB220	Air Brake SAE J 1402	15
RRH150	Radiator Hot Water	16

FUEL OIL & GAS

RODH150	Fuel & Oil Discharge	17
RODH300	20 Bar Ultra Fuel & Oil	17
ROFLO50	Fuel Line	18
ROSD150	Oil Suction	18
ROSD400	Rig Supply Fuel/Mud Suction	19
ROSD600	40 Bar Oil Suction	19
RMSD30	20 Bar Multi Suction/Discharge	20
RMEH045	Marine Exhaust	20

Table of Contents

FUEL OIL & GAS

RGD1	Twin Weld LPG	21
RGD2	Twin Weld Acetylene	21
RGD5	Solo Weld	22
RGD6	Solo Weld	22

FOOD & CHEMICAL

RBD150	Brewers Delivery	23
RBS150	Brewers Suction	23
RBS150X	Extraflex Food	24
RBM230	Beverage Master 230	24
RBM150	Beverage Master 150	25
RBS090	Milk Collector	25
RCS240	Food Grade Chemical	26

STEAM

RSH250	Steel Steam	27
RSGP090	Greaseproof Steam	27
RSNC090	Food Grade Steam	28

MATERIAL HANDLING

RSBH150	Sand Blast	29
RSDF100	FRAS Stone Dust	29
RCDH150	Abrasive Delivery	30
RCSD150	Cement Suction	30
RMCI00	Muff Coupling	31
RASD150	Air Seeder	31
RRC500	Discovery RC Drill	32
RBT600	Grouting & Concrete	32
RCD1200	Steel Concrete	33
RTC045	Transport Collector	33

TECHNICAL RESOURCES

Flange Identification	35
Sanitising Chart	36
Chemical Chart	37-50

RED MULTI-PURPOSE



PART NO	Size	ID	OD	Working Pressure		Burst Pressure		Weight
	INCH	MM	MM	BAR	PSI	BAR	PSI	KG/MT
RMD300-0019	3/16	5	12	20	300	60	900	0.16
RMD300-0025	1/4	6	13	20	300	60	900	0.17
RMD300-0031	5/16	8	15	20	300	60	900	0.2
RMD300-0038	3/8	10	17	20	300	60	900	0.24
RMD300-0050	1/2	12	21	20	300	60	900	0.34
RMD300-0063	5/8	16	26	20	300	60	900	0.53
RMD300-0075	3/4	19	29	20	300	60	900	0.6
RMD300-0100	1	25	36	20	300	60	900	0.8
RMD300-0125	1-1/4	32	44	20	300	60	900	1.28
RMD300-0150	1-1/2	38	53	20	300	60	900	1.49
RMD300-0200	2	50	63	10	150	30	450	1.65

APPLICATION: Multi-purpose hose for conveying air, water, oil, petroleum and various chemicals
TUBE: Black nitrile rubber NBR, fuel resistant to 55% aromatic content
REINFORCEMENT: Braided synthetic cord
COVER: Red Smooth NBR blend resistant to weather & abrasion (*2" Wrapped Finish)
TEMPERATURE: -20c to +90c
COILS: 20mt coils & 100mt plastic spools (up to 25mm size)
BRANDING: White print, SUNFLEX RMD300 MULTI-PURPOSE WP 20 BAR

EAGLE AIR & WATER



PART NO	Size	ID	OD	Working Pressure		Burst Pressure		Weight
	INCH	MM	MM	BAR	PSI	BAR	PSI	KG/MT
RAWY200-0050	1/2	12	20	14	200	42	600	0.34
RAWY200-0075	3/4	19	29	14	200	42	600	0.6
RAWY200-0100	1	25	36	14	200	42	600	0.8

PART NO	Size	ID	OD	Working Pressure		Burst Pressure		Weight
	INCH	MM	MM	BAR	PSI	BAR	PSI	KG/MT
RAWB200-0050	1/2	12	20	14	200	42	600	0.34
RAWB200-0075	3/4	19	29	14	200	42	600	0.6
RAWB200-0100	1	25	36	14	200	42	600	0.8

APPLICATION: Jackhammer hose. Air & water transfer in mining and industrial applications
TUBE: Black smooth SBR rubber with oil mist resistance
REINFORCEMENT: Braided synthetic cord
COVER: Black Smooth SBR/EPDM blend, resistant to weather & abrasion
TEMPERATURE: -20c to +70c
COILS: 20mt coils & 100mt plastic spools
BRANDING: White print, SUNFLEX RAWY200 EAGLE AIR WP 14 BAR

MULTISERVIZ



PART NO	Size	ID	OD	Working Pressure		Burst Pressure		Weight
	INCH	MM	MM	BAR	PSI	BAR	PSI	KG/MT
RMSH300-0038	3/8	10	18	20	300	60	900	0.21
RMSH300-0050	1/2	12	21	20	300	60	900	0.24
RMSH300-0075	3/4	19	29	20	300	60	900	0.44
RMSH300-0100	1	25	36	20	300	60	900	0.53

APPLICATION: Versatile multi-purpose hose suitable for transfer of air, water, fuel and various chemicals
TUBE: Black smooth thermoplastic rubber
REINFORCEMENT: Braided synthetic cord
COVER: Red, thermoplastic with resistance to weather & abrasion
TEMPERATURE: -10c to +60c
COILS: 20mt coils & 100mt coils
BRANDING: Black print, SUNFLEX MSH300 20 BAR

TPR AIR & WATER



PART NO	Size	ID	OD	Working Pressure		Burst Pressure		Weight
	INCH	MM	MM	BAR	PSI	BAR	PSI	KG/MT
RAWY300T-0038	3/8	10	18	20	300	60	900	0.21
RAWY300T-0050	1/2	12	21	20	300	60	900	0.24
RAWY300T-0075	3/4	19	29	20	300	60	900	0.44
RAWY300T-0100	1	25	36	20	300	60	900	0.53

PART NO	Size	ID	OD	Working Pressure		Burst Pressure		Weight
	INCH	MM	MM	BAR	PSI	BAR	PSI	KG/MT
RAWB300T-0038	3/8	10	18	20	300	60	900	0.21
RAWB300T-0050	1/2	12	21	20	300	60	900	0.24
RWAB300T-0075	3/4	19	29	20	300	60	900	0.44
RAWB300T-0100	1	25	36	20	300	60	900	0.53

APPLICATION: Versatile multi-purpose hose suitable for transfer of air, water,
TUBE: Black smooth thermoplastic rubber
REINFORCEMENT: Braided synthetic cord
COVER: Yellow or Black, thermoplastic with resistance to weather & abrasion
TEMPERATURE: -10c to +60c
COILS: 20mt coils & 100mt coils
BRANDING: Print, SUNFLEX AH300 20 BAR

10 BAR AIR & WATER



PART NO	Size	ID	OD	Working Pressure		Burst Pressure		Weight
	INCH	MM	MM	BAR	PSI	BAR	PSI	KG/MT
RAWB150-0100	1	25	34	10	150	30	450	0.66
RAWB150-0125	1-1/4	32	42	10	150	30	450	0.93
RAWB150-0150	1-1/2	38	48	10	150	30	450	1.07
RAWB150-0200	2	51	61	10	150	30	450	1.43
RAWB150-0250	2-1/2	64	76	10	150	30	450	1.81
RAWB150-0300	3	76	89	10	150	30	450	2.30
RAWB150-0400	4	102	114	10	150	30	450	3.75
RAWB150-0450	4-1/2	114	127	10	150	30	450	3.91
RAWB150-0500	5	127	140	10	150	30	450	4.12
RAWB150-0600	6	152	167	10	150	30	450	4.88
RAWB150-0800	8	203	219	10	150	30	450	7.74
RAWB150-1000	10	254	272	10	150	30	450	10.10

- APPLICATION:** General purpose hose for air, water and mild chemicals
TUBE: Black Smooth natural rubber NR compound with oil mist resistance
REINFORCEMENT: High tensile polyester braid
COVER: Black wrapped finish SBR compound with resistance to weather & abrasion
TEMPERATURE: -40c to +70c
COILS: 20mt coils & 60mt coils on request
BRANDING: Green transfer tape, SUNFLEX AWB150 AIR/WATER DELIVERY WP10BAR

20 BAR AIR & WATER (BLACK)



PART NO	Size	ID	OD	Working Pressure		Burst Pressure		Weight
	INCH	MM	MM	BAR	PSI	BAR	PSI	KG/MT
RAWB300-0150	1-1/2	38	52	20	300	60	600	1.30
RAWB300-0200	2	51	66	20	300	60	600	1.52
RAWB300-0250	2-1/2	64	79	20	300	60	600	2.16
RAWB300-0300	3	76	94	20	300	60	600	2.22
RAWB300-0400	4	102	121	20	300	60	600	4.00

- APPLICATION:** General purpose hose for air, water in construction & mining applications
TUBE: Black Smooth SBR compound with oil mist resistance
REINFORCEMENT: High tensile polyester braid
COVER: Black wrapped finish SBR compound with resistance to weather & abrasion
TEMPERATURE: -40c to +85c
COILS: 20mt coils & 60mt coils on request
BRANDING: Green transfer tape, SUNFLEX AH3000 AIR/WATER DELIVERY WP20BAR

20 BAR AIR & WATER YELLOW



PART NO	Size	ID	OD	Working Pressure		Burst Pressure		Weight
	INCH	MM	MM	BAR	PSI	BAR	PSI	KG/MT
RAWY300-0100	1	25	35	20	300	60	600	0.51
RAWY300-0150	1-1/2	38	52	20	300	60	600	1.30
RAWY300-0200	2	51	66	10	150	30	450	1.52
RAWY300-0250	2-1/2	64	79	10	150	30	450	2.16
RAWY300-0300	3	76	94	10	150	30	450	2.22
RAWY300-0400	4	102	121	10	150	30	450	4.00

APPLICATION: General purpose hose for air, water in construction & mining applications
TUBE: Black Smooth SBR compound with oil mist resistance
REINFORCEMENT: High tensile polyester braid
COVER: Yellow wrapped finish SBR compound with resistance to weather & abrasion
TEMPERATURE: -40c to +85c
COILS: 20mt coils & 60mt coils on request
BRANDING: Green transfer tape, SUNFLEX AH3000 AIR/WATER DELIVERY WP20BAR

FRAS AIR & WATER (AS2660)



PART NO	Size	ID	OD	Working Pressure		Burst Pressure		Weight
	INCH	MM	MM	BAR	PSI	BAR	PSI	KG/MT
RAWF300-0050	1/2	12	23	20	300	60	600	0.37
RAWF300-0075	3/4	19	31	20	300	60	600	0.63
RAWF300-0100	1	25	36	20	300	60	600	0.78
RAWF300-0125	1-1/4	32	44	20	300	60	600	0.98
RAWF300-0150	1-1/2	38	52	20	300	60	600	1.20
RAWF300-0200	2	51	66	20	300	60	600	2.21
RAWF300-0250	2-1/2	64	80	20	300	60	600	3.37
RAWF300-0300	3	76	92	20	300	60	600	4.15
RAWF300-0400	4	102	122	20	300	60	600	5.50
RAWF300-0600	6	152	172	20	300	60	600	7.20

APPLICATION: Meets AS2660 class B for air & water transfer in underground coal mines
TUBE: Black Smooth NR/SBR blend with oil mist resistance
REINFORCEMENT: High tensile polyester braid
COVER: Black wrapped finish SBR blend with resistance to weather & abrasion
TEMPERATURE: -40c to +75c
COILS: 20mt coils & 60mt coils on request
BRANDING: Orange transfer tape SUNFLEX AWF300 AIR/WATER DELIVERY FRAS AS2660

40 BAR AIR/WATER



PART NO	Size	ID	OD	Working Pressure		Burst Pressure		Weight
	INCH	MM	MM	BAR	PSI	BAR	PSI	KG/MT
RAH600-0075	3/4	19	31	40	600	160	2400	0.74
RAH600-0100	1	25	38	40	600	160	2400	0.91
RAH600-0125	1-1/4	32	45	40	600	160	2400	1.51
RAH600-0150	1-1/2	38	56	40	600	160	2400	1.93
RAH600-0200	2	51	69	40	600	160	2400	2.40
RAH600-0250	2-1/2	64	81	40	600	160	2400	2.90
RAH600-0300	3	76	95	40	600	160	2400	4.68
RAH600-0400	4	102	120	40	600	160	2400	7.34
RAH600-0600	6	152	175	40	600	160	2400	10.30

APPLICATION: Designed for most severe condition in mining, quarries & construction sectors
TUBE: Black Smooth NBR rubber with resistance to oil
REINFORCEMENT: 2 wire high tensile steel reinforcement
COVER: Black wrapped finish SBR blend with resistance to weather & abrasion
TEMPERATURE: -40c to +100c
COILS: 61mt coils
BRANDING: Clear transfer tape black text SUNFLEX AH600 AIR/WATER WP 40BAR

ULTIMATE DRILL RIG



PART NO	Size	ID	OD	Working Pressure		Burst Pressure		Weight
	INCH	MM	MM	BAR	PSI	BAR	PSI	KG/MT
HYD-R2HT-24	1-1/2	38	53.7	90	1300	360	5200	2.39
HYD-R2HT-32	2	51	66.7	78	1100	310	4500	3.07

APPLICATION: Drill rig & underground mining air hose capable of withstanding high temperatures
TUBE: Black oil resistant synthetic rubber
REINFORCEMENT: 2 wire high tensile steel reinforcement
COVER: Blue wrapped finish synthetic rubber with resistance to weather & abrasion
 Pinpricked cover to minimize cover separation
TEMPERATURE: -40c to +135c
COILS: 20mt & 46mt coils
BRANDING: White transfer tape SUNFLEX ULTIMATE HIGH TEMP R2HT

WATER SUCTION



PART NO	Size	ID	OD	Working Pressure		Burst Pressure		Weight	B Rad	Vacuum
	INCH	MM	MM	BAR	PSI	BAR	PSI	KG/MT	MM	Inches Mg
RWSD150-0100	1	25	36	10	150	30	450	0.76	150	26
RWSD150-0125	1-1/4	32	42	10	150	30	450	0.92	200	26
RWSD150-0150	1-1/2	38	48	10	150	30	450	1.20	225	26
RWSD150-0200	2	51	63	10	150	30	450	1.79	300	26
RWSD150-0250	2-1/2	64	77	10	150	30	450	2.27	375	26
RWSD150-0300	3	76	89	10	150	30	450	2.65	450	26
RWSD150-0400	4	102	118	10	150	30	450	5.10	600	26
RWSD150-0500	5	127	143	10	150	30	450	8.10	760	26
RWSD150-0600	6	152	170	10	150	30	450	9.30	900	26
RWSD150-0800	8	203	223	10	150	30	450	14.6	1650	24
RWSD150-1000	10	254	282	10	150	30	450	19.2	1800	24
RWSD150-1200	12	306	328	10	150	30	450	25.6	2400	24

APPLICATION: Heavy duty water suction for use in agricultural, mining & construction
TUBE: Black smooth natural rubber NR
REINFORCEMENT: High tensile polyester braid plus wire helix
COVER: Black wrapped finish SBR blend resistant to weather & abrasion
TEMPERATURE: -40c to +70c
COILS: 20mt coils & 60mt coils on request
BRANDING: Green transfer tape SUNFLEX WSD150 WATER SUCTION HOSE WP10BAR

FRAS WATER SUCTION



PART NO	Size	ID	OD	Working Pressure		Burst Pressure		Weight	B Rad	Vacuum
	INCH	MM	MM	BAR	PSI	BAR	PSI	KG/MT	MM	Inches Mg
RWSDF150-0100	1	25	36	10	150	30	450	0.76	150	26
RWSDF150-0200	2	51	65	10	150	30	450	2.1	300	26
RWSDF150-0300	3	76	90	10	150	30	450	3.27	450	26
RWSDF150-0400	4	102	117	10	150	30	450	5.18	600	26
RWSDF150-0600	6	152	171	10	150	30	450	9.3	900	26

APPLICATION: Heavy duty water suction for use in agricultural, mining & construction meets AS2660 for use in underground coal mines
TUBE: Black smooth natural rubber NR
REINFORCEMENT: High tensile polyester braid plus wire helix
COVER: Black wrapped finish SBR blend resistant to weather & abrasion
TEMPERATURE: -40c to +70c
COILS: 20mt coils & 60mt coils on request
BRANDING: Orange transfer tape SUNFLEX WSDF150 WATER SUCTION FRAS WP10BAR)

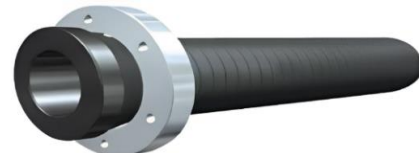
CONTRACTORS SUCTION



PART NO	Size	ID	OD	Working Pressure		Burst Pressure		Weight	B Rad	Vacuum
	INCH	MM	MM	BAR	PSI	BAR	PSI	KG/MT	MM	Inches Mg
RWSC150-0400	4	102	123	10	150	30	450	4.59	500	26
RWSC150-0600	6	152	176	10	150	30	450	7.86	800	26
RWSC150-0800	8	204	240	10	150	30	450	11.7	1500	26

APPLICATION: Pumping contractor's heavy-duty water suction hose
TUBE: Black smooth natural rubber NR
REINFORCEMENT: High tensile polyester braid plus wire helix
COVER: Corrugated black wrapped finish SBR blend resistant to weather & abrasion
TEMPERATURE: -40c to +70c
COILS: 3mt & 6mt lengths supplied with soft cuff ends for easy fitting.
 Cuff OD: 4" (123mm), 6" (174mm), 8" (232mm)
BRANDING: Green transfer tape SUNFLEX RWSC150 WATER SUCTION HOSE WP10BAR

DEWATERING SOLUTIONS



PART NO	Size	ID	OD	Working Pressure		Burst Pressure		Weight	B Rad	Vacuum
	INCH	MM	MM	BAR	PSI	BAR	PSI	KG/MT	MM	Inches Mg
RSDW150-0400EX6M	4	102	123	10	150	40	600	4.7	800	26
RSDW150-0600EX6M	6	152	174	10	150	40	600	7.8	1200	26
RSDW150-0800EX6M	8	204	232	10	150	40	600	12.42	2000	24
RSDW150-1000EX6M	10	254	286	10	150	40	600	18.45	2500	24
RSDW150-1200EX6M	12	304	336	10	150	40	600	25.1	3000	24
RSDW150-1400EX6M	14	355	406	10	150	40	600	33.56	4200	24

APPLICATION: Mine, quarries & construction sector water transfer
 Factory built to meet client needs, with integrally fitted flanges built in
TUBE: Black smooth natural rubber NR, abrasive resistant 4.5mm thickness tube
REINFORCEMENT: High tensile polyester braid plus wire helix
COVER: Black wrapped finish neoprene CR compound resistant to weather & abrasion
TEMPERATURE: -40c to +80c
COILS: Made to order, integrally fitted flanges. Stocked 6mt assemblies with table E
BRANDING: Yellow Transfer tape SUNFLEX DEWATERING SOLUTION

FRAS CABLE TRAILING



PART NO	Size	ID	OD	Working Pressure		Burst Pressure		Weight
	INCH	MM	MM	BAR	PSI	BAR	PSI	KG/MT
RFCT070-0050	1/2	12	24	5	70	15	210	0.48
RFCT070-0063	5/8	16	27	5	70	15	210	0.59
RFCT070-0075	3/4	19	29	5	70	15	210	0.6
RFCT070-0100	1	25	35	5	70	15	210	0.75
RFCT070-0125	1-1/4	32	42	5	70	15	210	0.88
RFCT070-0150	1-1/2	38	48	5	70	15	210	1.08
RFCT070-0175	13/4	44	55	5	70	15	210	1.22
RFCT070-0200	2	51	60	5	70	15	210	1.38

APPLICATION: Conduit in underground coal mine. Low pressure delivery hose. Meets AS2660
TUBE: Black smooth NR/SBR blend
REINFORCEMENT: High tensile polyester braid
COVER: Black wrapped finish NR/SBR blend resistant to weather & abrasion
TEMPERATURE: -40c to +75c
COILS: 20mt coils
BRANDING: Orange tape SUNFLEX RFCT070 FRAS CABLE TRAILING AS2660 WP 5BAR

HOT AIR BLOWER



PART NO	Size	ID	OD	Working Pressure		Burst Pressure		Weight	B Rad	Vacuum
	INCH	MM	MM	BAR	PSI	BAR	PSI	KG/MT	MM	Inches Mg
RHAB090-0300	3	76	92	6	90	24	360	2.88	450	22
RHAB090-0400	4	102	118	6	90	24	360	3.77	600	22

APPLICATION: Bulk pressure tankers to convey air from compressor to tank
TUBE: Black smooth EPDM heat resistant rubber
REINFORCEMENT: High tensile polyester braid plus wire helix
COVER: Black wrapped finish EPDM rubber resistant to weather & abrasion
TEMPERATURE: -40c to +170c
COILS: 20mt coils
BRANDING: Red print HOT AIR BLOWER WP 6BAR

WHITE HOT WASH



PART NO	Size	ID	OD	Working Pressure		Burst Pressure		Weight
	INCH	MM	MM	BAR	PSI	BAR	PSI	KG/MT
RWHW300-0050	1/2	12	24	20	300	60	900	0.51
RWHW300-0075	3/4	19	33	20	300	60	900	0.69
RWHW300-0100	1	25	39	20	300	60	900	0.81

APPLICATION: Hot water washdown in food processing areas & abattoirs
TUBE: White EPDM rubber for heat resistance
REINFORCEMENT: High tensile polyester braid
COVER: White smooth EPDM rubber resistant to cleaning chemicals, animal & vegetable fats
TEMPERATURE: -20c to +125c
COILS: 20mt coils & 100mt plastic spools
BRANDING: SUNFLEX RWHW300 GP WASHDOWN 20 BAR

MULTI-THOR HOT WASH



PART NO	Size	ID	OD	Working Pressure		Burst Pressure		Weight
	INCH	MM	MM	BAR	PSI	BAR	PSI	KG/MT
RWFG150-0050	1/2	12	22	10	150	30	450	0.3
RWFG150-0075	3/4	19	31	10	150	30	450	0.7

APPLICATION: Hot water washdown in food processing. Food quality & ideal on hose reels
TUBE: White FDA food quality EPDM rubber for heat resistance
REINFORCEMENT: High tensile polyester braid
COVER: Blue wrapped finish EPDM resistant to cleaning chemicals, animal & vegetable fats
TEMPERATURE: -30c to +120C
COILS: 100 mt coils
BRANDING: MULTITHOR 10 -EPDM-FDA

CAR HEATER



PART NO	Size		ID	OD	Working Pressure		Burst Pressure		Weight
	INCH	MM	MM	MM	BAR	PSI	BAR	PSI	KG/MT
RCHH100-0050	1/2	12	20	7	105	21	315	0.3	
RCHH100-0063	5/8	16	23	7	105	21	315	0.34	
RCHH100-0075	3/4	19	27	7	105	21	315	0.46	

APPLICATION: Hot water transfer in automotive heating systems
TUBE: Black EPDM rubber for heat resistance
REINFORCEMENT: High tensile polyester braid
COVER: Black smooth EPDM rubber resistant to weather & abrasion
TEMPERATURE: -20c to +100c
COILS: 20mt coils & 100mt plastic spools
BRANDING: SUNFLEX RCHH100 CAR HEATER HOSE WP 7 BAR

AIR BRAKE SAE J 1402



PART NO	Size		ID	OD	Working Pressure		Burst Pressure		Weight
	INCH	MM	MM	MM	BAR	PSI	BAR	PSI	KG/MT
RAB220-0038	3/8	10	19	15	220	60	880	0.28	
RAB220-0050	1/2	12	22	15	220	60	880	0.36	

APPLICATION: Designed for use in compressed air brake systems on trucks, trailer and buses
TUBE: Black EPDM rubber for heat resistance
REINFORCEMENT: High tensile polyester braid
COVER: Black smooth EPDM rubber
TEMPERATURE: -40c to +93c
COILS: 20mt coils & 100mt plastic spools
BRANDING: SUNFLEX RAB220 AIR BRAKE SAE J 1402 WP 15 BAR

RADIATOR/HOT WATER



AIR & WATER

PART NO	Size	ID/OD	Pressure		Weight KG/MT
	INCH		Work	Bursting	
RRH150-050	1/2	13X23	10	30	0.424
RRH150-0063	5/8	16X26	10	30	0.480
RRH150-0075	3/4	19X30	10	30	0.629
RRH150-0088	7/8	22X33	10	30	0.706
RRH150-0100	1	25X36	10	30	0.714
RRH150-0113	1-1/8	28X39	10	30	0.811
RRH150-0119	1-3/16	30X41	10	30	0.85 8
RRH150-0125	1-1/4	32X43	10	30	0.907
RRH150-0138	1-3/8	35X46	10	30	0.980
RRH150-0150	1-1/2	38X49	10	30	1.075
RRH150-0156	1-9/16	40X51	10	30	1.125
RRH150-0163	1-5/8	42X52	10	30	0.995
RRH150-0175	1-3/4	45X56	10	30	1.278
RRH150-0188	1-7/8	48X60	10	30	1.450
RRH150-0200	2	51X64	10	30	1.7 0 0
RRH150-0213	2-1/8	55X68	10	30	1.761
RRH150-0225	2-1/4	57X70	10	30	1.818
RRH150-0238	2-3/8	60X73	10	30	1.938
RRH150-0250	2-1/2	64X77	10	30	2.147
RRH150-0256	2-9/16	65X79	10	30	2.193
RRH150-0263	2-5/8	68X81	10	30	2.207
RRH150-0275	2-3/4	70X84	10	30	2.345
RRH150-0288	2-7/8	73X87	10	30	2.475
RRH150-0300	3	76X89	10	30	2.369
RRH150-0313	3-1/8	80X94	10	30	2.691
RRH150-0325	3-3/4	82X96	10	30	2.769
RRH150-0338	3-3/8	85X99	10	30	2.790
RRH150-0350	3-1/2	90X104	10	30	2.951
RRH150-0375	3-3/4	95X109	10	30	3.153
RRH150-0400	4	102X117	10	30	3.517
RRH150-0450	4-1/2	114X129	10	30	3.860
RRH150-0500	5	127X141	10	30	3.907
RRH150-0550	5-1/2	140X156	10	30	5.144
RRH150-0600	6	152X172	10	30	6.990
RRH150-0663	6-5/8	168X187	10	30	7.242

APPLICATION: Hot water transfer in automotive & industrial applications
TUBE: Black EPDM rubber for heat resistance
REINFORCEMENT: High tensile polyester braid
COVER: Black wrapped EPDM rubber resistant to weather & abrasion
TEMPERATURE: -20c to +125c
COILS: 3 Foot (915mm) lengths
BRANDING: SUNFLEX RH150 RADIATOR HOT WATER HOSE WP 10 BAR

FUEL & OIL DISCHARGE



PART NO	Size	ID	OD	Working Pressure		Burst Pressure		Weight	B Rad
	INCH	MM	MM	BAR	PSI	BAR	PSI	KG/MT	MM
RODH150-0075	3/4	19	30	10	150	30	450	0.58	250
RODH150-0100	1	25	36	10	150	30	450	0.64	320
RODH150-0125	1-1/4	32	44	10	150	30	450	0.88	350
RODH150-0150	1-1/2	38	48	10	150	30	450	1.07	380
RODH150-0175	1-3/4	45	54	10	150	30	450	1.36	450
RODH150-0200	2	51	61	10	150	30	450	1.43	510
RODH150-0250	2-1/2	63	74	10	150	30	450	1.81	600
RODH150-0300	3	76	88	10	150	30	450	2.39	630
RODH150-0350	3-1/2	90	104	10	150	30	450	3.46	900
RODH150-0400	4	102	114	10	150	30	450	3.75	1020

APPLICATION: *Transfer of fuels and oils up to 50% aromatic content*
TUBE: *Black smooth nitrile rubber*
REINFORCEMENT: *High tensile polyester braid plus anti-static copper wire*
COVER: *Black wrapped finish with oil resistance*
TEMPERATURE: *-20c to +80c*
COILS: *20mt coils*
BRANDING: *Red transfer tape SUNFLEX ODH150 OIL DELIVERY WP 10 BAR*

20 BAR ULTRA FUEL & OIL



PART NO	Size	ID	OD	Working Pressure		Burst Pressure		Weight	B Rad
	INCH	MM	MM	BAR	PSI	BAR	PSI	KG/MT	MM
RODH300-0125	1-1/4	32	44	20	300	60	870	0.65	250

APPLICATION: *Ideal for hose reel applications Meet AS2683 with conductive compounds*
TUBE: *Black smooth conductive nitrile rubber*
REINFORCEMENT: *High tensile polyester braid*
COVER: *Black wrapped finish conductive compound with oil resistance*
TEMPERATURE: *-20c to +80c*
COILS: *60mt coils*
BRANDING: *Red transfer tape SUNFLEX ODH300 OIL DELIVERY WP 20 BAR*

FUEL LINE



PART NO	Size	ID	OD	Working Pressue		Burst Pressure		Weight
	INCH	MM	MM	BAR	PSI	BAR	PSI	KG/MT
ROFLO50-0019	3/16	5	12	3.5	50	17	250	0.16
ROFLO50-0025	1/4	6	13	3.5	50	17	250	0.17
ROFLO50-0031	5/16	8	14	3.5	50	17	250	0.19
ROFLO50-0038	3/8	10	16	3.5	50	17	250	0.22
ROFLO50-0050	1/2	12	20	2.4	35	12	175	0.30

APPLICATION: Automotive fuel systems, meets SAE 30R7
TUBE: Black smooth nitrile rubber
REINFORCEMENT: High tensile polyester braid plus wire helix
COVER: Black smooth oil resistant cover
TEMPERATURE: -20c to +70c
COILS: 20mt coils & 100mt plastic spools
BRANDING: White print SUNFLEX ROFLO50 FUEL LINE SAE J30R7 WP

OIL SUCTION



PART NO	Size	ID	OD	Working Pressure		Burst Pressure		Weight	B Rad	Vacuum
	INCH	MM	MM	BAR	PSI	BAR	PSI	KG/MT	MM	Inches Mg
ROSD150-0075	3/4	19	30	10	150	30	450	0.59	75	26
ROSD150-0100	1	25	35	10	150	30	450	0.79	150	26
ROSD150-0125	1-1/4	32	42	10	150	30	450	0.97	192	26
ROSD150-0150	1-1/2	38	51	10	150	30	450	1.40	228	26
ROSD150-0175	1-3/4	45	57	10	150	30	450	1.43	266	26
ROSD150-0200	2	51	62	10	150	30	450	1.81	306	26
ROSD150-0250	2-1/2	63	77	10	150	30	450	2.28	378	26
ROSD150-0300	3	76	92	10	150	30	450	2.93	456	26
ROSD150-0350	3-1/2	90	104	10	150	30	450	3.46	540	26
ROSD150-0400	4	102	120	10	150	30	450	4.95	612	26
ROSD150-0500	5	127	147	10	150	30	450	6.60	762	26
ROSD150-0600	6	152	172	10	150	30	450	7.80	912	26
ROSD150-0800	8	203	227	10	150	30	450	9.00	1650	24
ROSD150-1000	10	254	282	10	150	30	450	20.03	2035	24
ROSD150-1200	12	305	341	10	150	30	450	28.5	2600	24

APPLICATION: Transfer of fuels and oils up to 50% aromatic content. Hydraulic oil return
TUBE: Black smooth nitrile rubber
REINFORCEMENT: High tensile polyester braid plus anti-static copper wire
COVER: Black wrapped finish with oil resistance
TEMPERATURE: -20c to +80c
COILS: 20mt coils & 60mt coils on request
BRANDING: Red transfer tape SUNFLEX OSD150 OIL SUCTION WP 10 BAR

RIG SUPPLY FUEL/ MUD SUCTION



PART NO	Size	ID	OD	Working Pressure		Burst Pressure		Weight	B Rad	Vacuum
	INCH	MM	MM	BAR	PSI	BAR	PSI	KG/MT	MM	Inches Mg
ROSD400-0300	3	76	99	27	400	81	1200	4.46	380	26
ROSD400-0400	4	102	126	27	400	81	1200	6.38	510	26
ROSD400-0500	5	127	156	27	400	81	1200	8.89	635	26

APPLICATION: Transfer of mud, fuels and oils up to 50% aromatic content
TUBE: Black smooth nitrile rubber
REINFORCEMENT: Wire helix, high tensile polyester braid plus anti-static copper wire
COVER: Black wrapped finish with oil resistance
TEMPERATURE: -20c to +100c
COILS: 61mt coils
BRANDING: Brown transfer tape SUNFLEX OSD400 RIG SUPPLY WP 27 BAR

40 BAR OIL SUCTION



PART NO	Size	ID	OD	Working Pressure		Burst Pressure		Weight	B Rad	Vacuum
	INCH	MM	MM	BAR	PSI	BAR	PSI	KG/MT	MM	Inches Mg
ROSD600-0300	3	76	99	40	600	120	1800	4.88	230	26
ROSD600-0400	4	102	126	40	600	120	1800	6.48	400	26
ROSD600-0500	5	127	156	40	600	120	1800	10.25	720	26

APPLICATION: Transfer of fuels and oils up to 50% aromatic content
TUBE: Black smooth nitrile rubber
REINFORCEMENT: Wire helix, high tensile polyester braid plus anti-static copper wire
COVER: Black wrapped finish with oil resistance
TEMPERATURE: -20c to +100c
COILS: 61mt coils
BRANDING: Orange transfer tape SUNFLEX OSD600 WP 40 BAR

20 BAR MULTI SUCTION/DISCHARGE



PART NO	Size	ID	OD	Working Pressure		Burst Pressure		Weight	B Rad	Vacuum
	INCH	MM	MM	BAR	PSI	BAR	PSI	KG/MT	MM	Inches Mg
RMDS30-00200	2	51	65	20	300	60	900	1.98	250	26
RMDS30-00250	2-1/2	64	79	20	300	60	900	2.62	330	26
RMDS300-0300	3	76	93	20	300	60	900	3.40	420	26
RMDS300-0400	4	102	120	20	300	60	900	4.91	600	26
RMDS300-0500	5	127	149	20	300	60	900	7.15	750	26
RMDS300-0600	6	152	174	20	300	60	900	9.25	950	26
RMDS300-0800	8	203	230	20	300	60	900	14.79	1500	24
RMDS300-1000	10	254	288	20	300	60	900	21.44	1750	24
RMDS300-1200	12	306	343	20	300	60	900	29.06	2400	24

APPLICATION: Fuels and oils up to 50% aromatic content with anti-static cover
TUBE: Black smooth nitrile rubber
REINFORCEMENT: High tensile polyester braid
COVER: Black wrapped finish with oil resistance
TEMPERATURE: -20c to +100c
COILS: 61mt coils
BRANDING: Purple transfer tape SUNFLEX MSD300 WP 20 BAR

MARINE EXHAUST



PART NO	Size	ID	OD	Working Pressure		Burst Pressure		Weight	B Rad
	INCH	MM	MM	BAR	PSI	BAR	PSI	KG/MT	MM
RMEH045-0100	1	25	34.5	3	45	9	135	0.60	65
RMEH045-0125	1-1/4	32	41.5	3	45	9	135	0.62	70
RMEH045-0150	1-1/2	38	47.5	3	45	9	135	0.76	80
RMEH045-0175	1-3/4	45	55.5	3	45	9	135	0.89	90
RMEH045-0200	2	51	61.5	3	45	9	135	0.99	100
RMEH045-0225	2-1/4	57	67.5	3	45	9	135	1.23	115
RMEH045-0228	2-3/8	60	71.5	3	45	9	135	1.28	120
RMEH045-0250	2-1/2	63	77.5	3	45	9	135	1.65	125
RMEH045-0275	2-3/4	70	81.5	3	45	9	135	1.66	140
RMEH045-0300	3	76	89.5	3	45	9	135	1.97	150
RMEH045-0350	3-1/2	90	104	3	45	9	135	2.51	180
RMEH045-0400	4	102	115.5	3	45	9	135	2.79	200
RMEH045-0450	4-1/2	114	127.5	3	45	9	135	3.12	225
RMEH045-0500	5	127	142	3	45	9	135	3.36	250
RMEH045-0600	6	152	167	3	45	9	135	4.70	300
RMEH045-0800	8	203	224.5	3	45	9	135	8.68	610

APPLICATION: Cooling and heat exchanges exhaust hose for pleasure craft
TUBE: Black smooth oil and sea water resistant
REINFORCEMENT: Wire helix and polyester braid
COVER: Black wrapped finish resistant to heat and marine environment
TEMPERATURE: -30c to +100c
COILS: 20mt coils
BRANDING: MARINE WET EXHAUST

TWIN WELD LPG



PART NO	Size	ID	OD	Working Pressure		Burst Pressure		Weight
	INCH	MM	MM	BAR	PSI	BAR	PSI	KG/MT
RGD1-0019	5/16	5	12	20	300	60	900	0.31
RGD1-0038	3/8	10	18	20	300	60	900	0.56

APPLICATION: LPG/OXYGEN hose for welding and gas cutting applications
TUBE: Black smooth SBR blend
REINFORCEMENT: High tensile polyester braid
COVER: Blue / Orange cover weather & abrasion resistant
TEMPERATURE: -35c to +100c
COILS: 20mt coils & 100mt plastic spools
BRANDING: White print TOTALRUBBER RGD1

TWIN WELD ACETYLENE



PART NO	Size	ID	OD	Working Pressure		Burst Pressure		Weight
	INCH	MM	MM	BAR	PSI	BAR	PSI	KG/MT
RGD2-0019	5/16	5	12	20	300	60	900	0.31
RGD2-0025	1/4	6	14	20	300	60	900	0.40
RGD2-0038	3/8	10	18	20	300	60	900	0.56

APPLICATION: Acetylene/Oxygen hose for welding and gas cutting applications
TUBE: Black smooth SBR blend
REINFORCEMENT: High tensile polyester braid
COVER: Blue / Red cover weather & abrasion resistant
TEMPERATURE: -35c to +100c
COILS: 20mt coils & 100mt plastic spools
BRANDING: White print TOTALRUBBER RGD2

SOLO WELD



PART NO	Size	ID	OD	Working Pressure		Burst Pressure		Weight
	INCH	MM	MM	BAR	PSI	BAR	PSI	KG/MT
RGD5-0019	5/16	5	12	17	250	52	750	0.15
RGD5-0038	3/8	10	18	17	250	52	750	0.28

PART NO	Size	ID	OD	Working Pressure		Burst Pressure		Weight
	INCH	MM	MM	BAR	PSI	BAR	PSI	KG/MT
RGD6-0019	5/16	5	12	20	300	60	900	0.15

- APPLICATION:** *Single line welding and Argon hoses*
- TUBE:** *Black smooth SBR blend*
- REINFORCEMENT:** *High tensile polyester braid*
- COVER:** *Orange & black cover weather & abrasion resistant*
- TEMPERATURE:** *-35c to +100c*
- COILS:** *20mt coils & 100mt plastic spools*
- BRANDING:** *White print TOTALRUBBER RGD5. For Argon hose RGD6*

BREWERS DELIVERY



PART NO	Size	ID	OD	Working Pressure		Burst Pressure		Weight
	INCH	MM	MM	BAR	PSI	BAR	PSI	KG/MT
RBD150-0100	1	25	37	10	150	30	450	0.78
RBD150-0150	1-1/2	38	52	10	150	30	450	1.12
RBD150-0200	2	51	68	10	150	30	450	1.90
RBD150-0250	2-1/2	65	84	10	150	30	450	2.27
RBD150-0300	3	76	93	10	150	30	450	2.70
RBD150-0300/LF	3	76	88	10	150	30	450	1.90
RBD150-0400	4	102	120	10	150	30	450	3.90
RBD150-0600	6	152	170	10	150	30	450	5.90

- APPLICATION:** Food grade delivery hose. Drinking water, wine, beer & alcohol to 92%, Also suitable for fatty food stuffs of vegetable origin
- TUBE:** White smooth mirror finish EPDM, odorless & taste free. Complying with F.D.A standards. Free from phthalates-BPA-Bisphenol A.
- REINFORCEMENT:** High tensile textile plies
- COVER:** Red wrapped finish resistant to weather and abrasion
- TEMPERATURE:** -30c to 90c (CIP) Clean up to 130c for maximum of 30 minutes
- COILS:** 20mt & 60mt coils
- BRANDING:** CANTINA FDA PHTHALATES FREE

BREWERS SUCTION



PART NO	Size	ID	OD	Working Pressure		Burst Pressure		Weight	B Rad	Vacuum
	INCH	MM	MM	BAR	PSI	BAR	PSI	KG/MT	MM	Inches Mg
RBS150-0100	1	25	37	10	150	30	450	0.93	125	26
RBS150-0150	1-1/2	38	52	10	150	30	450	1.41	190	26
RBS150-0200	2	51	65	10	150	30	450	1.90	250	26
RBS150-0250	2-1/2	65	84	10	150	30	450	2.74	325	26
RBS150-0300	3	76	92	10	150	30	450	3.20	375	26
RBS150-0400	4	102	120	10	150	30	450	4.64	500	26
RBS150-0600	6	152	170	10	150	30	450	9.30	900	26

- APPLICATION:** Food grade suction hose. Drinking water, wine, beer & alcohol to 92%, Also suitable for fatty food stuffs of vegetable origin
- TUBE:** White smooth mirror finish EPDM, odorless & taste free. Complying with F.D.A standards. Free from phthalates-BPA-Bisphenol A.
- REINFORCEMENT:** High tensile textile plies, plus wire helix
- COVER:** Red wrapped finish resistant to weather and abrasion
- TEMPERATURE:** -30c to 90c (CIP) Clean up to 130c for maximum of 30 minutes
- COILS:** 20mt & 60mt coils
- BRANDING:** CANTINA FDA PHTHALATES FREE

EXTRAFLEX FOOD



PART NO	Size	ID	OD	Working Pressure		Burst Pressure		Weight	B Rad	Vacuum
	INCH	MM	MM	BAR	PSI	BAR	PSI	KG/MT	MM	Inches Mg
RBS150X-0200	2	51	65	10	150	30	450	1.61	110	26
RBS150X-0300	3	76	92	10	150	30	450	2.75	170	26
RBS150X-0400	4	102	122	10	150	30	450	4.64	220	26

APPLICATION: SUPER FLEXIBLE Food grade suction hose. Drinking water, wine, beer & alcohol to 92%, Also suitable for fatty food stuffs of vegetable origin, milk, yoghurt and dairy products

TUBE: White smooth mirror finish Butyl rubber, odorless & taste free. Complying with F.D.A standards. Free from phthalates-BPA-Bisphenol A.

REINFORCEMENT: High tensile textile plies, plus wire helix

COVER: Blue wrapped finish resistant to weather and abrasion

TEMPERATURE: -30c to 90c (CIP) Clean up to 130c for maximum of 30 minutes

COILS: 20mt

BRANDING: BUTYL FOOD PHTHALATES FREE

BEVERAGE MASTER 230



PART NO	Size	ID	OD	Working Pressure		Burst Pressure		Weight	B Rad	Vacuum
	INCH	MM	MM	BAR	PSI	BAR	PSI	KG/MT	MM	Inches Mg
RBM230-0100	1	25	40	16	230	48	700	1.00	125	23
RBM230-0150	1-1/2	38	54	16	230	48	700	1.50	200	23
RBM230-0200	2	51	68	16	230	48	700	2.05	250	23
RBM230-0250	2-1/2	63	83	16	230	48	700	2.90	300	23
RBM230-0300	3	76	97	16	230	48	700	3.50	380	23
RBM230-0400	4	102	120	16	230	48	700	7.00	510	23

APPLICATION: ANTI CRUSH Food grade suction hose. Drinking water, wine, beer & alcohol to 98%, Also suitable for fatty food stuffs of vegetable origin, yoghurt and dairy products

TUBE: White smooth mirror finish IIR rubber, odorless & taste free. Complying with F.D.A standards. Free from phthalates-BPA-Bisphenol A.

REINFORCEMENT: High tensile textile plies, plus CRUSH RESISTANT thermoplastic helix

COVER: Grey wrapped finish resistant to weather and abrasion

TEMPERATURE: -30c to 120c (CIP) Clean up to 130c for maximum of 30 minutes

COILS: 20mt & 60mt coils

BRANDING: TOTALRUBBER RBM230 BEVERAGE MASTER WP 16 BAR

BEVERAGE MASTER 150



PART NO	Size	ID	OD	Working Pressure		Burst Pressure		Weight	B Rad	Vacuum
	INCH	MM	MM	BAR	PSI	BAR	PSI	KG/MT	MM	Inches Mg
RBM150-0200	2	51	65	10	150	30	435	1.60	250	20
RBM150-0300	3	76	92	10	150	30	435	2.66	380	20

APPLICATION: ANTI CRUSH Food grade suction hose. Drinking water, wine, beer & alcohol to 98%, Also suitable for fatty food stuffs of vegetable origin, yoghurt and dairy products

TUBE: White smooth mirror finish IIR rubber, odorless & taste free.
Complying with F.D.A standards. Free from phthalates-BPA-Bisphenol A.

REINFORCEMENT: High tensile textile plies, plus CRUSH RESISTANT thermoplastic helix

COVER: Grey wrapped finish resistant to weather and abrasion

TEMPERATURE: -30c to 120c (CIP) Clean up to 130c for maximum of 30 minutes

COILS: 20mt & 60mt coils

BRANDING: TOTALRUBBER RBM150 BEVERAGE MASTER WP 10 BAR

MILK COLLECTOR



PART NO	Size	ID	OD	Working Pressure		Burst Pressure		Weight	B Rad	Vacuum
	INCH	MM	MM	BAR	PSI	BAR	PSI	KG/MT	MM	Inches Mg
RBS090-0200	2	51	63	6	90	18	260	1.50	80	26
RBS090-0250	2-1/2	63	75	6	90	18	260	1.80	126	26
RBS090-0300	3	76	89	6	90	18	260	3.00	152	26

APPLICATION: Light & flexible, Food grade suction hose. Drinking water, wine, beer & alcohol to 96%, Also suitable for fatty food stuffs of vegetable origin, yoghurt and dairy products

TUBE: White smooth mirror finish NR rubber, odorless & taste free.
Complying with F.D.A standards. Free from phthalates-BPA-Bisphenol A.

REINFORCEMENT: High tensile textile plies, plus wire helix

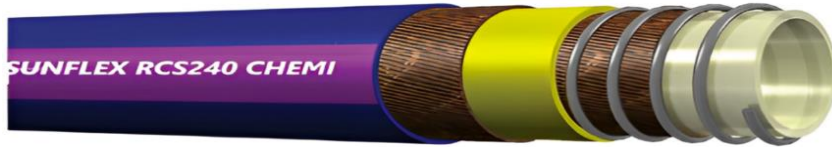
COVER: Blue wrapped finish resistant to weather and abrasion

TEMPERATURE: -30c to 80c (CIP) Clean up to 110c for maximum of 30 minutes

COILS: 20mt & 40mt coils

BRANDING: GALAFLEX WLB PHTHALATE FREE

FOOD GRADE CHEMICAL



PART NO	Size	ID	OD	Working Pressure		Burst Pressure		Weight	B Rad	Vacuum
	INCH	MM	MM	BAR	PSI	BAR	PSI	KG/MT	MM	Inches Mg
RCS240-0075	3/4	19	31	16	240	64	920	0.76	85	26
RCS240-0100	1	25	38	16	240	64	920	1.01	115	26
RCS240-0125	1-1/4	32	44	16	240	64	920	1.19	145	26
RCS240-0150	1-1/2	38	51	16	240	64	920	1.46	170	26
RCS240-0200	2	50	65	16	240	64	920	2.28	230	26
RCS240-0250	2-1/2	64	78	16	240	64	920	2.62	285	26
RCS240-0300	3	76	92	16	240	64	920	3.58	345	26
RCS240-0400	4	102	120	16	240	64	920	5.47	4.55	26

- APPLICATION:** *Chemical & Food grade suction hose, Wine, Beer & alcohol to 98%, also suitable for fatty food stuffs of vegetable origin, yoghurt and dairy products*
- TUBE:** *White smooth UHMWPE, food grade PE*
- REINFORCEMENT:** *High tensile textile plies, plus wire helix*
- COVER:** *Blue wrapped finish resistant to weather and abrasion*
- TEMPERATURE:** *-30c to 80c (CIP) Clean up to 130c for maximum of 30 minutes*
- COILS:** *20mt & 60mt coils*
- BRANDING:** *TOTALRUBBER RCS240 CHEMICAL SUCTION WP 16 BAR*

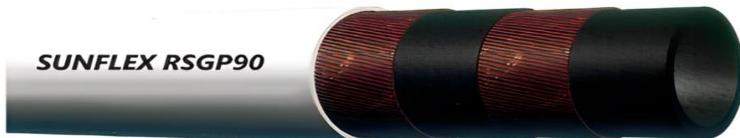
STEEL STEAM



PART NO	Size	ID	OD	Working Pressure		Burst Pressure		Weight	B Rad
	INCH	MM	MM	BAR	PSI	BAR	PSI	KG/MT	MM
RSH250-0050	1/2	12	25	17	250	170	2500	0.53	91
RSH250-0075	3/4	19	32	17	250	170	2500	0.68	133
RSH250-0100	1	25	29	17	250	170	2500	0.90	175
RSH250-0125	1-1/4	32	46	17	250	170	2500	1.30	224
RSH250-0150	1-1/2	38	54	17	250	170	2500	1.60	266
RSH250-0200	2	50	67	17	250	170	2500	2.20	357
RSH250-0250	2-1/2	63	83	17	250	170	2500	3.80	445
RSH250-0300	3	76	95	17	250	170	2500	4.66	532
RSH250-0400	4	102	124	17	250	170	2500	6.50	714

APPLICATION: High pressure hose designed for super-heated steam meets BS5342 type B
TUBE: Black smooth EPDM rubber
REINFORCEMENT: High tensile steel plies
COVER: Red EPDM wrapped finish resistant to weather and abrasion, pin pricked
TEMPERATURE: -40c to 220c
COILS: 60mt coils
BRANDING: SUNFLEX SH250 STEAM WP 17 BAR

GREASEPROOF STEAM



PART NO	Size	ID	OD	Working Pressure		Working Pressure		Burst Pressure		Weight
				With Steam		Hot Water				
	INCH	MM	MM	BAR	PSI	BAR	PSI	BAR	PSI	KG/MT
RSGP090-0050	1/2	12	23	6	90	15	225	60	900	0.35
RSGP090-0075	3/4	19	31	6	90	15	225	60	900	0.40
RSGP090-0100	1	25	39	6	90	15	225	60	900	1.00

APPLICATION: Steam hose used in greasy food processing & abattoirs locations
TUBE: Black smooth EPDM rubber
REINFORCEMENT: High tensile polyester braid
COVER: White EPDM wrapped finish resistant to animal fats, cleaning chemicals
TEMPERATURE: -40c to 164c
COILS: 60mt coils
BRANDING: RSGP GREASEPROFF STEAM WP 6 BAR (HOT WATER WP 15 BAR)

STEAM

FOOD GRADE STEAM



PART NO	Size	ID	OD	Working Pressure		Working Pressure		Burst Pressure		Weight
				With Steam		Hot Water				
	INCH	MM	MM	BAR	PSI	BAR	PSI	BAR	PSI	KG/MT
RSNC090-0050	1/2	12	23	6	90	15	225	60	900	0.35
RSNC090-0075	3/4	19	31	6	90	15	225	60	900	0.40
RSNC090-0100	1	25	39	6	90	15	225	60	900	1.00
RSNC090-0125	1-1/4	25	46	6	90	15	225	60	900	1.00
RSNC090-0150	1-1/2	12	54	6	90	15	225	60	900	0.35
RSNC090-0200	2	19	66	6	90	15	225	60	900	0.40

APPLICATION: Steam hose used in greasy food processing & abattoirs locations

TUBE: White smooth EPDM rubber, FDA Food grade

REINFORCEMENT: High tensile polyester braid

COVER: Blue Non-Conductive EPDM wrapped finish, resistant to animal fats, cleaning chemicals

TEMPERATURE: -40c to 164c

COILS: 20mt & 60mt coils

BRANDING: RSNC090 FOOD GRADE STEAM WP 6 BAR (HOT WATER WP 15 BAR)

STEAM

SAND BLAST



PART NO	Size	ID	OD	Working Pressure		Burst Pressure		Weight	B Rad
	INCH	MM	MM	BAR	PSI	BAR	PSI	KG/MT	MM
RSBH150-0050	1/2	12	28	10	150	30	450	0.51	130
RSBH150-0075	3/4	19	33	10	150	30	450	0.70	190
RSBH150-0100	1	25	48	10	150	30	450	1.65	254
RSBH150-0100L	1	25	40	10	150	30	450	1.25	220
RSBH150-0125	1-1/4	32	55	10	150	30	450	2.26	320
RSBH150-0125L	1-1/4	32	48	10	150	30	450	1.44	300
RSBH150-0150	1-1/2	38	60	10	150	30	450	2.40	380
RSBH150-0200	2	50	76	10	150	30	450	2.91	510

- APPLICATION:** Abrasive blasting applications, thick abrasive tube for extra-long service life
- TUBE:** Black smooth abrasive resistant natural rubber
- REINFORCEMENT:** High tensile polyester braid
- COVER:** Black wrapped finish rubber resistant to weather & abrasion
- TEMPERATURE:** -35c to +70c
- COILS:** 20mt & 60mt coils
- BRANDING:** Yellow transfer, SUNFLEX SBH150 SAND BLAST WP 10 BAR

FRAS STONE DUST



PART NO	Size	ID	OD	Working Pressure		Burst Pressure		Weight
	INCH	MM	MM	BAR	PSI	BAR	PSI	KG/MT
RSDF100-0200	2	50	76	7	100	21	300	0.51

- APPLICATION:** Abrasive resistant hose for Stone dust applications. Meets AS2660
- TUBE:** Black smooth abrasive resistant natural rubber
- REINFORCEMENT:** High tensile polyester braid
- COVER:** Black wrapped finish rubber resistant to weather & abrasion
- TEMPERATURE:** -35c to +70c
- COILS:** 20mt coils
- BRANDING:** Yellow transfer, SUNFLEX SDF150 STONE DUSTING WP 7 BAR

ABRASIVE DELIVERY



PART NO	Size	ID	OD	Working Pressure		Burst Pressure		Weight
	INCH	MM	MM	BAR	PSI	BAR	PSI	KG/MT
RCDH150-0300	3	76	95	10	150	30	450	3.45
RCDH150-0400	4	102	122	10	150	30	450	4.56
RCDH150-0500	5	127	149	10	150	30	450	6.01

- APPLICATION:** Abrasive Delivery hose ideal for dry cement transfer from tankers
- TUBE:** Black smooth abrasive resistant natural rubber
- REINFORCEMENT:** High tensile polyester braid
- COVER:** Black wrapped finish rubber resistant to weather & abrasion
- TEMPERATURE:** -35c to +70c
- COILS:** 20mt & 60mt coils
- BRANDING:** Yellow transfer, SUNFLEX CDH150 ABRASIVE DELIVERY WP 10 BAR

CEMENT SUCTION



PART NO	Size	ID	OD	Working Pressure		Burst Pressure		Weight	B Rad	Vacuum
	INCH	MM	MM	BAR	PSI	BAR	PSI	KG/MT	MM	Inches Mg
RCSD150-0300	3	76	98	10	150	10	150	2.90	456	26
RCSD150-0400	4	102	124	10	150	10	150	4.67	612	26
RCSD150-0500	5	127	152	10	150	10	150	5.80	762	26
RCSD150-0600	6	152	174	10	150	10	150	10.10	900	26

- APPLICATION:** Abrasive Delivery hose ideal for dry cement transfer
- TUBE:** Black smooth abrasive resistant natural rubber
- REINFORCEMENT:** High tensile polyester braid, plus wire helix
- COVER:** Black wrapped finish rubber resistant to weather & abrasion
- TEMPERATURE:** -35c to +70c
- COILS:** 20mt & 60mt coils
- BRANDING:** Green transfer, SUNFLEX CSD150 BULK MATERIAL SUCTION WP 10 BAR

MUFF COUPLING



PART NO	Size	ID	OD	Working Pressure		Burst Pressure		Weight	B Rad	Vacuum
	INCH	MM	MM	BAR	PSI	BAR	PSI	KG/MT	MM	Inches Mg
RMCI00-0200	2	51	71	7	100	21	300	4.90	280	26
RMCI00-0250	2-1/2	64	81	7	100	21	300	5.88	320	26
RMCI00-0300	3	77	103	7	100	21	300	6.90	456	26
RMCI00-0400	4	102	128	7	100	21	300	8.60	612	26
RMCI00-0500	5	127	157	7	100	21	300	8.95	762	26
RMCI00-0600	6	152	182	7	100	21	300	10.15	900	26
RMCI00-0800	8	204	236	7	100	21	300	14.80	1850	26
RMCI00-1000	10	254	288	7	100	21	300	20.30	1980	24
RMCI00-1200	12	305	344	7	100	21	300	34.36	2500	24
RMCI00-1400	14	354	390	7	100	21	300	39.11	3200	24

- APPLICATION:** *Transfer of abrasive slurries in mineral extraction
Enabling on site fitting with bolt on couplings "Muff Couplings"*
- TUBE:** *Black smooth abrasive resistant natural rubber*
- REINFORCEMENT:** *High tensile polyester braid, plus wire helix*
- COVER:** *Black wrapped finish rubber resistant to weather & abrasion*
- TEMPERATURE:** *-35c to +70c*
- COILS:** *Sizes 2" to 8" in 20mt coils, 6" to 14" in 6mt & 10mt lengths*
- BRANDING:** *Yellow transfer, SUNFLEX RMC100 MUFF COUPLING HOSE WP 7 BAR*

AIR SEEDER



PART NO	Size	ID	OD	Working Pressure		Burst Pressure		Weight	B Rad	Vacuum
	INCH	MM	MM	BAR	PSI	BAR	PSI	KG/MT	MM	Inches Mg
RASD150-0125	1-1/4	32	43	10	150	30	450	1.26	200	26
RASD150-0150	1-1/2	38	49	10	150	30	450	1.46	225	26
RASD150-0175	1-3/4	44	56	10	150	30	450	1.7	275	26
RASD150-0200	2	51	63	10	150	30	450	1.84	300	26
RASD150-0250	2-1/2	64	77	10	150	30	450	2.61	375	26
RASD150-0300	3	76	88	10	150	30	450	3.2	450	26

- APPLICATION:** *Transfer of seed on agricultural seeding machines also light duty slurries*
- TUBE:** *Black smooth abrasive resistant natural rubber*
- REINFORCEMENT:** *High tensile polyester braid, plus wire helix*
- COVER:** *Black wrapped finish rubber resistant to weather & abrasion*
- TEMPERATURE:** *-35c to +70c*
- COILS:** *20mt*
- BRANDING:** *Yellow transfer, SUNFLEX RASD150 AIR SEEDER HOSE WP 10 BAR*

MATERIAL HANDLING

DISCOVERY RC DRILL



PART NO	Size	ID	OD	Working Pressure		Burst Pressure		Weight	B Rad	Vacuum
	INCH	MM	MM	BAR	PSI	BAR	PSI	KG/MT	MM	Inches Mg
RRC500-0300	3	76	104	35	500	105	1500	5.04	304	26
RRC500-0400	2-1/2	102	136	35	500	105	1500	7.78	408	26

APPLICATION: Extremely High pressure, abrasive transfer hose used on reverse cycle drill rigs
TUBE: Black smooth abrasive resistant natural rubber
REINFORCEMENT: High tensile polyester braid, plus wire helix
COVER: Black wrapped finish rubber resistant to weather & abrasion
TEMPERATURE: -40c to +85c
COILS: 20mt & 30mt coils
BRANDING: Yellow transfer, TOTALRUBBER DISCOVERY WP 35 BAR

GROUTING & CONCRETE



PART NO	Size	ID	OD	Working Pressure		Burst Pressure		Weight	B Rad
	INCH	MM	MM	BAR	PSI	BAR	PSI	KG/MT	MM
RBT600-0125	1-1/4	32	46	40	600	120	1800	1.02	190
RBT600-0150	1-1/2	38	54	40	600	120	1800	1.42	225
RBT600-0200	2	51	68	40	600	120	1800	1.96	280
RBT600-0250	2-1/2	63	83	40	600	120	1800	2.86	375
RBT600-0300	3	76	98	40	600	120	1800	3.14	440
RBT600-0400	4	102	130	40	600	120	1800	4.13	580

APPLICATION: Spraying of concrete, plaster, gypsum and grout. HD Construction to resist kinking
TUBE: Black smooth abrasive resistant natural rubber
REINFORCEMENT: High tensile polyester braid,
COVER: Black wrapped finish rubber resistant to weather & abrasion
TEMPERATURE: -40c to +85c
COILS: 40mt
BRANDING: White transfer, SUNFLEX BT600 GROUTING HOSE WP 40 BAR

STEEL CONCRETE



PART NO	Size	ID	OD	Working Pressure		Burst Pressure		Weight	B Rad
	INCH	MM	MM	BAR	PSI	BAR	PSI	KG/MT	MM
RCD1200-0200	2	51	70	85	1200	200	2900	3.03	200
RCD1200-0250	2-1/2	63	87	85	1200	200	2900	4.48	240
RCD1200-0300	3	76	98	85	1200	200	2900	5.46	275
RCD1200-0400	4	102	128	85	1200	200	2900	8.46	350
RCD1200-0500	5	127	153	85	1200	200	2900	9.62	425

APPLICATION: Heavy duty, High pressure concrete placement hose
TUBE: Black smooth abrasive resistant natural rubber
REINFORCEMENT: High tensile steel cords
COVER: Black wrapped finish rubber resistant to weather & abrasion
TEMPERATURE: -40c to +85c
COILS: 20mt
BRANDING: Red transfer, SUNFLEX RCD1200 CONCRETE DELIVERY WP 85 BAR

TRANSPORT COLLECTOR



PART NO	Size	ID	OD	Working Pressure		Burst Pressure		Weight	B Rad	Vacuum
	INCH	MM	MM	BAR	PSI	BAR	PSI	KG/MT	MM	Inches Mg
RTC045-0300	3	76	90	3	45	9	130	2.20	230	22
RTC045-0400	4	102	117	3	45	9	130	3.30	300	20
RTC045-0500	5	127	145	3	45	9	130	4.35	380	20
RTC045-0600	6	152	171	3	45	9	130	5.60	450	17
RTC045-0800	8	203	226	3	45	9	130	8.80	600	17

APPLICATION: Extremely flexible abrasive pickup hose used on vacuum tankers
TUBE: Black smooth abrasive resistant & CONDUCTIVE natural rubber
REINFORCEMENT: High tensile polyester braid, plus wire helix
COVER: Black wrapped finish rubber resistant to weather & abrasion
TEMPERATURE: -30c to +75c
COILS: 20mt
BRANDING: Yellow transfer, SUNFLEX TRANSPORT COLLECTOR WP 3 BAR

TR Workshop Hose Assemblies

Crimp

Swage

Re-seal

Machined

Bauer Type

Flanged

Rolled

Hydraulic

Muff Coupling



Kits

Sets

Custom
Manufacture



Flange Identification Chart							
Size	Table/Class	Diam. Of Flange	Bolt Circle Diam.	No. of Bolts	Bolt size & length	Diam. Holes	Cast/Forged Steel
80	Table D	185	146	4	M16 X 60	18	10
	Table E	185	146	4	M16 X 60	18	11
	Table H	205	165	8	M16X 75	18	22
	ANSI 150	191	152.4	4	5/8 X 90	20	24
	ANSI 300	210	168.3	8	3/4 X 110	23	32
	ANSI 600	210	168.3	8	3/4 X 125	23	32
	PN 16	200	160	8	-	18	0-
100	Table D	215	178	4	M16 X 65	18	10
	Table E	215	178	8	M16 X 65	18	13
	Table H	230	191	8	M16X 85	18	25
	ANSI 150	229	190.5	8	5/8 X 90	20	24
	ANSI 300	254	200	8	3/4 X 110	23	32
	ANSI 600	273	215.9	8	7/8 X 140	26	38
	PN 16	220	180	8	-	18	0-
125	Table D	225	210	8	M16 X 65	18	13
	Table E	225	210	8	M16 X 65	22	17
	Table H	280	235	8	M20X 95	22	29
	ANSI 150	254	215.9	8	3/4 X 100	23	26
	ANSI 300	279	234.9	8	3/4 X 125	23	37
	ANSI 600	330	266.7	8	1 X 170	29	48
	PN 16	250	2190	8	-	22	0-
150	Table D	280	235	8	M16 X 65	18	13
	Table E	280	235	8	M20X 65	22	17
	Table H	305	260	12	M20X 95	22	29
	ANSI 150	279	241.3	8	3/4 X 100	23	26
	ANSI 300	318	269.9	12	3/4 X 125	23	37
	ANSI 600	356	292.1	12	1X 170	29	48
	PN 16	285	240	8	-	22	0-
200	Table D	335	292	8	M16 X 65	18	13
	Table E	335	292	8	M20 X 65	22	19
	Table H	370	324	12	M20X 100	22	32
	ANSI 150	343	298.4	8	3/4 X 110	23	29
	ANSI 300	381	330.2	12	7/8 X 140	26	41
	ANSI 600	419	349.2	12	1 1/8 X 195	32	56
	PN 10	340	295	8	-	22	0-
PN 16	340	280	12	-	22	-	
250	Table D	405	356	8	M20 X 75	22	-
	Table E	405	356	12	M20X 75	22	22
	Table H	430	381	12	M24 X 120	26	35
	ANSI 150	406	361.9	12	7/8 X 115	29	30
	ANSI 600	510	431.8	16	1 1/4 X 215	35	64
	PN 10	395	350	8	-	22	-
	PN 16	405	350	12	-	22	-
300	Table D	455	406	12	M20 X 85	22	22
	Table E	455	406	12	M24 X 85	26	25
	Table H	490	438	16	M24 X 110	26	41
	ANSI 150	483	431.8	12	7/8 X 120	26	32
	ANSI 300	520	450.8	16	1 1/8 X 170	32	51
	PN 10	445	400	12	-	22	-
	PN 16	450	410	12	-	25	-
350	Table D	525	470	12	M24 X 95	26	25
	Table E	525	470	12	M24 X 95	26	29
	Table H	550	495	16	M27 X 130	30	48
	ANSI 150	535	476.2	12	1 X 130	29	35
	ANSI 300	585	514.3	20	1 1/8 X 175	32	54
375	Table D	550	495	12	M24 X 95	26	22
	Table E	559	495	12	M24 X 95	26	32
400	Table D	580	521	12	M24 X 95	26	22
	Table E	580	521	12	M24 X 100	26	32
	Table H	610	558.2	20	M27 X 140	30	54
	ANSI 150	597	539.7	16	1 X 130	29	37
	ANSI 300	650	571.5	20	1 1/4 X 190	35	57



Procedure for sanitising Sunflex food-quality hoses

The sanitising procedure incorporates all those physical and chemical treatments which are essential to guarantee that the tube can be labelled “clean” from physical, chemical and biological aspects. A surface can be considered clean when there is no trace of contaminants and is not unctuous to the touch. Please follow the instructions mentioned below to ensure that no noxious substances or processing residues may affect the conveyed food stuffs.

First Cleaning

Normally new hoses have the typical “rubber smell” and may contain different processing residues (such as surfactants, dust). These hoses should be treated before their use with hot water (80-90°C), phosphoric acid (max.2%for10minutes), followed by a sodium hydroxide solution(max.5%for15minutes) and finally rinsed with potable water. The possible drying can be done with steam at 110°C

Sanitising

Our food-quality hoses may be treated with the most common cleaning agents and disinfectants, including the Clean in Place (CIP) procedures. We suggest in any case to follow the concentrations and the instructions given by manufactures of the detergents in question, referring even to our Chemical Resistance Chart.

TUBE	NR	NBR	EPDM	IIR	UHMWPE
Steam	110°C Max 30 Min	110°C Max 30 Min	110°C Max 30 Min	110°C Max 30 Min	110°C Max 30 Min
Soda	5% X 15 Min	5% X 15 Min	5% X 15 Min	5% X 15 Min	5% X 15 Min
Peracetic Acid	1% x 30 Min	1% x 30 Min	1% x 30 Min	1% x 30 Min	1% x 30 Min
Phosphoric Acid	2% x 10 Min	2% x 10 Min	2% x 15 Min	2% x 15 Min	2% x 15 Min
Nitric Acid	2% x 10 Min	2% x 10 Min	2% x 15 Min	2% x 15 Min	2% x 15 Min

The cleaning and sanitising procedure of the food-quality hoses, if carried out normal conditions, neither causes changes in their properties nor affects their lifetime.

On the contrary, the treatment at extreme temperatures and concentration, or for too long time, will quickly weaken the materials properties and consequently will considerably shorten the life of the hose.

Chemical Resistance Chart

The Following data is based on tests and believed to be reliable, however we emphasise that the tabulation should be used as a guide only, since it does not take into consideration all the variables such as elevated temperatures, fluid contamination, concentration ect that may be encountered in actual use. All critical applications should be tested. Note data below based on 20 c

NR Natural rubber EPDM Heat resistant SBR Synthetic Rubber IIR Butyl NBR Nitrile CR Neoprene
 E Excellent G Good F Fair = Unsuitable Blank No Data

	NR	EPDM	SBR	IIR	NBR	UHMWPE	CR
2-2-4-Trimethyl Amine Pentane	=	=	=	=	E	E	
3-Methoxypropanol	=	E	=	E	E	E	
4-Nonyl Phenol	=	=	=	=	=	E	F
Acetaldehyde	F	G	F	G	F	E	F
Acetamide	=	E	=	G	F	E	E
Acetanilide	E	E	E	E	F		E
Acetic Acid 05%	G	E	G	E	G	E	E
Acetic Acid 10%	G	E	G	E	F	E	G
Acetic Acid 20%	F	G	F	G	F	E	F
Acetic Acid 50%	F	G	F	G	F	E	F
Acetic Acid 60 %	=	G	=	G	=	E	F
Acetic Acid Amylester	F	E	F	E	F	E	F
Acetic Acid Butylester	F	E	F	E	=	E	F
Acetic Acid Ethylester	F	E	F	E	=	E	F
Acetic Acid Glacial	=	G	=	G	=	E	F
Acetic Acid Methylester	F	E	F	E	=	E	F
Acetic Acid Propylester	F	E	F	E	=	E	F
Acetic Acid Vinylester	F	E	F	E	=	E	F
Acetic Acid-2-Methoxyethylester	F	G	F		=	E	
Acetic Anhydride	F	G	F	G	F	E	G
Acetoacetic Acid	E	E	E	E	F	E	E
Acetone	=	E	=	E	=	E	=
Acetone Cyanohidrin	F	E	F	E	F	E	E
Acetone Cyanohydrin		=		E	=	E	
Acetonitrile	=	G	=	F	=	E	F
Acetophenetidine	=	=	=	=	G	E	=
Acetophenone	=	G	=	G	=	E	=
Acetotoluidide	=	=	=	=	G	E	=
Acetyl Acetone	=	E	=	G	F	E	F
Acetyl Bromide	=	E	=	E	=	E	=
Acetyl Cellulose		G			=	E	
Acetyl Chloride	=	F	=	F	=	G	=
Acetyl Chloride	F	F	F	F	F	E	F
Acetyl Oxide	=	E	=	E	=	G	=
Acetylene	G	E	G	E	E	E	G
Acetylene Dichloride	F	F	F	F	=	G	F
Acetylene Tetrabromide	=	E	=	E	=	G	G
Acetylene Tetrachloride	=	=	=	=	=	F	=
Acetylsalicylic Acid	=	=	=	=	G	E	=
Acqua Regia	=	=	=	=	=	F	=
Acrolein	F	G	F	G	F	G	E
Acrylic Acid	=	=	=	=	G	G	=
Acrylic Acid Ethylester		E		E	=	E	=
Acrylic Acid Methyl Ester	=	=	=	=	=	E	=
Acrylic Acid Methylester					=	E	
Acrylonitrile	=	F	=	F	=	E	=
Adipic Acid Aq.	=	G	=	G	E	E	G
Adipic Acid Diethylester		=			=	E	
Adipic Diethyl Ester	=	E	=	E	F	E	E
Alkanes (Paraffin Hydrocarbons)	=	=	=	=	E	E	G
Alkanesulfonic Acid	=	=	=	=	E	E	G
Alkazene	=	=	=	=	=	E	=
Alkil Lauryl Sulphonate		E			E	E	

	NR	EPDM	SBR	IIR	NBR	UHMWPE	CR
Alkil Benzene	=	=	=	=	=	E	
Alkyl Acetone	E	E	E	E	F	E	E
Alkyl Alcohol	=	=	=	=	E	E	G
Alkyl Amine	=	=	=	=	E	E	G
Alkyl Aryl Sulfonates	=	=	=	=	E	E	G
Alkyl Benzene	=	=	=	=	G	E	=
Alkyl Chloride	=	=	=	=	G	E	=
Alkyl Sulfide	=	=	=	=	G	E	=
Alkyl naphthalene Sulfonic Acid	=	=	=	=	E	E	G
Allyl Acetate	=	=	=	=	=	E	=
Allyl Alcohol	E	E	E	E	E	E	
Allyl Bromide	=	=	=	=	G	G	
Allyl Chloride	=	=	=	=	G	G	E
Allylidene Diacetate	E	E	E	E	F	E	E
Alpha Picoline	E	E	E	E	F	E	E
Alum, Aqueous	E	E	E	E	G	E	E
Aluminium Acetate, Aqueous	G	E	G	G	F	E	G
Aluminium Bromide	E	E	E	E	E	E	E
Aluminium Chlorate	E	E	E	E	F	G	E
Aluminium Chloride, Aqueous	E	E	E	E	E	E	E
Aluminium Fluoride	G	E	G	E	E	E	E
Aluminium Fluorosilicate		E				E	
Aluminium Formate	E	E	E	E	F	E	E
Aluminium Hydroxide	E	E	E	E	G	E	E
Aluminium Linoleate	=	=	=	=	E	E	G
Aluminium Iodide		E				E	
Aluminium Nitrate, Aqueous	E	E	E	E	E	E	E
Aluminium Oxalate	E	E	E	E	F	E	E
Aluminium Phosphate	=	E	=	=	E	E	E
Aluminium Potassium Sulfate	E	E	E	E	F	E	E
Aluminium Salts	Refer to a specific one						
Aluminium Sulphate, Aqueous	E	E	E	E	E	E	E
Aluminium Sulphide	E	E	E	E	E	E	E
Amines	F	G	F	G	G	E	G
Amines, Aromatic	=	F	=	F	F	E	F
Aminobenzene	=	=	=	=	F	E	
Aminodiethyle		F			=	E	
Aminoethanol	G	E	G	E	G	E	G
Aminoethylethanolamine	G	E	G	E	G	E	G
Aminopropanol		G			F	E	
Ammonia 10%	G	E	G	E	E	E	G
Ammonia 30%	G	E	G	E	E	E	G
Ammonia Anhydrous	Anhydrous Ammonia Hose Only						
Ammonia Cupric Sulphate		=			E	E	
Ammonia Gas		E			E	E	
Ammonia Liquid		E			G	E	
Ammonia Vapour	Anhydrous Ammonia Hose Only						
Ammonia Water		E			E	E	
Ammonia, Gas, Cold	E	E	E	E	E	E	E
Ammoniated Latex		=			G	E	
Ammonium Acetate	E	E	E	E	F	E	E
Ammonium Arsenate	E	E	E	E	F	E	E
Ammonium Benzoate	E	E	E	E	F	E	E

	NR	EPDM	SBR	IIR	NBR	UHMWPE	CR
Ammonium Bicarbonate	E	E	E	E	F	E	E
Ammonium Bichromate						E	
Ammonium Biphosphate		E			E	E	
Ammonium Bisulfite	E	E	E	E	F	E	E
Ammonium Bisulphate		E			G	E	
Ammonium Bromide	E	E	E	E	E	E	E
Ammonium Carbamate	E	E	E	E	F	E	E
Ammonium Carbonate	E	E	E	E	=	E	E
Ammonium Chloride	E	E	E	E	E	E	E
Ammonium Citrate	E	E	E	E	F	E	E
Ammonium Dichromate	E	E	E	E	F	E	E
Ammonium Diphosphate	E	E	E	E	F	E	E
Ammonium Fluoride	E	E	E	E	E	E	E
Ammonium Formate	E	E	E	E	F	E	E
Ammonium Hydroxide, 3M	G	E	G	E	=	E	E
Ammonium Hydroxide, Concentrated	F	E	F	E	=	E	E
Ammonium Iodide	E	E	E	E	E	E	E
Ammonium Lactate	E	E	E	E	F	E	E
Ammonium Metaphosphate	E	E	E	E	F	E	E
Ammonium Molybdate	E	E	E	E	F	E	E
Ammonium Nitrate	G	E	G	E	E	E	E
Ammonium Nitrite	E	E	E		E	E	E
Ammonium Oxalate	E	E	E	E	F	E	E
Ammonium Perchlorate	E	E	E	E	F	E	E
Ammonium Persulphate	E	E	E	E	E	E	E
Ammonium Phosphate	E	E	E	E	E	E	E
Ammonium Stearate		E				E	
Ammonium Sulfide	G	E	G	E	E	E	E
Ammonium Sulfocyanide		E			E	E	
Ammonium Sulphate	E	E	E	E	E	E	E
Ammonium Thiocyanate	E	E	E	E	F	E	E
Ammonium Thioglycolate	E	E	E	E	F	E	E
Ammonium Thiosulfate	E	E	E	E	F	E	E
Ammonium Thyocyanate		E			E	E	
Ammonium Thyocyanide		E			E	E	
Ammonium Thyosulphate		E			E	E	
Ammonium Tungstate	E	E	E	E	F	E	E
Ammonium Valerate	E	E	E	E	F	E	E
Amyl Acetate	F	E	F	E	G	E	G
Amyl Acetone	F	F	F	F	=	E	F
Amyl Alcohol	G	E	G	E	G	E	G
Amyl Amine				G	F	E	
Amyl Borate	=	=	=	=	E	E	E
Amyl Bromide	F	G	F	G	E	E	E
Amyl Butyrate	=	=	=	=	E	E	G
Amyl Chloride	F	G	F	G	=	E	=
Amyl Chloronaphthalene	=	=	=	=	=	E	=
Amyl Cinnamic Aldehyde	=	=	=	=	G	E	=
Amyl Laurate	=	=	=	=	G	E	=
Amyl Mercaptan	=	=	=	=	G	E	=
Amyl Naphthalene	=	=	=	=	=	E	=
Amyl Naphthalene		=			=		
Amyl Nitrate	E	E	E	E	F	E	E
Amyl Nitrite	E	E	E	E	F	E	E
Amyl Oleate		E			E	E	
Amyl Oleate	=	F	=	=	E	E	
Amyl Phenol					=	E	
Amyl Phtalate		=			=	E	
Amyl Phthalate	=	G	=	G		E	
Amyl Propionate	=	=	=	=	E		G

	NR	EPDM	SBR	IIR	NBR	UHMWPE	CR
Amylamine	G	G	G	E	=	E	
Amylene Hydrate		G			E	E	
Anethole		=			=	G	
Aniline	F	G	F	G	=	E	=
Aniline Chlorohydrate		G			=	E	
Aniline Dyes	G	F	G	G	=	E	G
Aniline Hydrochloride	F	G	F	G	G	E	=
Aniline Sulfate	E	E	E	E	F	E	E
Aniline Sulfite	E	E	E	E	F	E	E
Aniline, Aniline Oil	=	F	=	E	=	E	F
Aniline, Dyes	G	F	G	E	=	E	G
Animal Fats	F	F	F	E	E	E	G
Anone		F			=	E	
Anthracene	=	=	=	=	G	E	=
Anti-Freeze	E	E	E	E	E	E	E
Antichlorine		E			E	E	
Antimony Chloride	=	=	=	=	E	E	G
Antimony Pentachloride	=	=	=	=	E	E	G
Antimony Tribromide	=	=	=	=	E	E	G
Antimony Trichloride	=	=	=	=	E	E	G
Antimony Trifluoride	=	=	=	=	E	E	G
Antimony Trioxide	=	=	=	=	E	E	G
Aqua Regia	=	=	=	=	=	=	=
Argon	E	E	E	E	E	E	E
Aromatic Fuel -50%	=	=	=	=	E	E	=
Aromatic Tar	=	=	=	=	G	E	=
Arquads					E		
Arsenic Acid	E	E	E	E	E	E	E
Arsenic Chloride					E	=	
Arsenic Trichloride					E	=	E
Ascorbic Acid	E	E	E	E	F	E	E
Askarel Transformer Oil	=	=	=	=	G	E	=
Aspartic Acid	E	E	E	E	F	E	E
Asphalt	=	=	=	=	E	E	F
Astm Fuel A	=	=	=	=	E	E	G
Astm Fuel B	=	=	=	=	E	E	=
Astm Fuel C	=	=	=	=	G	E	=
Astm Fuel D	=	=	=	=	G	E	=
Astm Oil, No. 1	=	=	=	=	E	E	E
Astm Oil, No. 2	=	=	=	=	E	E	G
Astm Oil, No. 3	=	=	=	=	E	E	=
Astm Oil, No. 4	=	=	=	=	G	E	=
Astm Oil, No. 5	=	=	=	=	E	E	G
Atl-857	=	=	=	=	G	E	=
Atlantic Dominion F	=	=	=	=	E	E	G
Atlantic Utro Gear-E	=	=	=	=	E	E	G
Atlantic Utro Gear-Ep Lube	=	=	=	=	E	E	G
Aure 903R (Mobil)	=	=	=	=	E	E	G
Aurex 256	=	=	=	=	=	E	=
Automatic Transmission Fluid	=	=	=	=	E	E	G
Automotive Brake Fluid	E	E	E	G	F	E	G
Axarel 9100	=	=	=	=	=	E	=
Azote Gas		E			E	E	
Banana Oil	F	F	F	G	E	E	G
Barium Acetate		G				E	
Barium Carbonate	E	E	E	E	E	E	E
Barium Chlorate	E	E	E	E	F	E	E
Barium Chloride	E	E	E	E	E	E	E
Barium Chromate		G				E	
Barium Cyanide	E	E	E	E	E	E	E

	NR	EPDM	SBR	IIR	NBR	UHMWPE	CR
Barium Fluoride		F			F	F	
Barium Hydrate		F			F	F	
Barium Hydroxide	E	E	E	E	E	E	E
Barium Iodide	E	E	E	E	E	E	E
Barium Nitrate	E	E	E	E	F	E	E
Barium Oxide	E	E	E	E	E	E	E
Barium Oxyde		E			E	E	
Barium Peroxide	E	E	E	E	F	E	E
Barium Polysulfide	E	E	E	E	F	E	E
Barium Stearate		E			E	E	
Barium Sulfate	E	E	E	E	E	E	E
Barium Sulfide	E	E	E	E	E	E	E
Bayol 35	=	=	=	=	E	E	G
Bayol D	=	=	=	=	E	E	G
Beer	E	E	E	E	E	E	E
Beet Sugar Liquors	E	E	E	E	E	E	E
Belt Oil		=			G		
Benzal Chloride		=			=	E	
Benzaldehyde	F	G	F	G	F	E	F
Benzene	=	=	=	=	F	G	=
Benzene Sulphonic Acid		F			=	E	
Benzene Trichloride		=			=		
Benzilic Acid	G	E	G	E	G	E	G
Benzine Petroleum Ether		=			E	E	
Benzine Petroleum Naphta		=			E	E	
Benzine-Benzol (50-50)		=			E	E	
Benzine-Benzol-Ethanol (50-30-20)		=			=	E	
Benzo-o-Dicarboxic Acid		E			E	E	
Benzocatechol	=	=	=	=	G	E	=
Benzoic Acid	=	F	=	F	=	E	G
Benzoic Acid Aldehyde		F			=		
Benzoic Acid Benzylester		F			=		
Benzoic Acid Ethylester					=	E	
Benzoic Acid Methylester		G			=	E	
Benzoic Aldehyde	F	G	F	G	G	E	G
Benzoin	=	=	=	=	G	E	=
Benzonitrile	E	E	E	E	F	E	E
Benzophenone	=	G	=	G	=	E	=
Benzoquinone	=	G	=	G	=	E	=
Benzotrifluoride	=	=	=	=	F	F	=
Benzoyl Chloride		=			=	E	
Benzyl Acetate	F	G	F	G	F	G	F
Benzyl Acrylate		F			=		
Benzyl Alcohol	F	G	F	G	G	E	F
Benzyl Benzoate		=			=		
Benzyl Butyl Phthalate	E	E	E	E	F	E	E
Benzyl Chloride		=			=	E	=
Benzylidene Chloride		=			=	E	
Beryllium Chloride	F	E	F	E	E	E	F
Beryllium Fluoride	F	E	F	E	E	E	F
Beryllium Oxide	F	E	F	E	E	E	F
Beryllium Sulfate	E	E	E	E	F	E	E
Bichromate of Soda		G			=	E	
Bismuth Carbonate	E	E	E	E	F	E	E
Bismuth Nitrate	E	E	E	E	F	E	E
Bismuth Oxychloride	E	E	E	E	F	E	E
Bitter Almonds Oil		F			=	E	
Black Sulfate Liquor	E	E	E	E	E	E	E
Blast Furnace Gas	F	F	F	F	F	E	E

	NR	EPDM	SBR	IIR	NBR	UHMWPE	CR
Bleach		F			=	G	
Bleach Liquor	F	E	F	E	F	E	G
Borax	G	E	G	E	G	E	=
Bordeaux Mixture	=	E	=	E	G	E	G
Boric Acid	E	E	E	E	E	E	E
Boric Oxide	E	E	E	E	F	E	E
Borie Acid		E			E	E	
Brake Fluid Dot3 (Glycol Type)	E	E	E	G	F	E	G
Brine	E	E	E	E	E	E	E
Bromic Acid	E	E	E	E	F	E	E
Bromine	=	=	=	=	=	G	=
Bromine Trifluoride	=	=	=	=	=	=	=
Bromine Water	=	G	=	G	=	E	=
Bromobenzene	=	=	=	=	=	F	=
Bromobenzene Cyanide	E	E	E	E	F	E	E
Bromochloromethane	F	F	F	F	F	G	F
Bromotoluene		=			=		
Brucine Sulfate	E	E	E	E	F	E	E
Bufane Gas		=			E	E	
Bunker'S "C" (Fuel Oil)	=	=	=	=	E	E	=
Butadiene	F	F	F	F	F	E	F
Butane	F	F	F	G	E	E	G
Butane Liquid		=			E	E	
Butane-Propane	Use Butane-Propane hose						
Butane, 2, 2-Dimethyl	F	=	F	=	E	E	G
Butanol		E			E	E	
Butanol (Butyl Alcohol)	E	G	E	G	E	E	E
Butanol Acetate		F			=		
Butene		F			E	G	
Butter-Animal Fat	=	E	=	G	E	E	G
Butyl Acetate		F		=	=	E	=
Butyl Acetoacetate		F			=	E	
Butyl Acetyl Ricinoleate		=			=		
Butyl Acetyl Ricinoleate	=	E	=	E	G	E	G
Butyl Acrylate		=		=	=	E	
Butyl Alcohol	E	G	E	G	E	E	E
Butyl Aldehyde	=	G	=	G	E	E	E
Butyl Amine	G	E	G	E	F	E	E
Butyl Benzene		=			=	E	
Butyl Benzolate	=	G	=	G	F	E	G
Butyl Benzyl Phthalate		F			=	E	
Butyl Bromide					=		
Butyl Butyrate					=	G	
Butyl Carbitol		E			G	E	
Butyl Cellosolve		E		E	E	F	G
Butyl Chloride		=		F	F	E	
Butyl Diethylene Glycol		E			E		
Butyl Diglycol		E			E	F	
Butyl Diglycol Acetate		E			=	E	
Butyl Ether		=		=	=	E	
Butyl Ethyl Acetaldehyde		F			=	F	
Butyl Ethyl Acetaldehyde	G	E	G	E	F	E	E
Butyl Ethyl Ether				=	=	E	
Butyl Glycol		E			E	F	
Butyl Glycol Acetate		E			=	E	
Butyl Mercaptan		=			=		
Butyl Monobutylether		E			35		
Butyl Oleate	=	G	=	G	=	E	=
Butyl Phtalate					=	E	
Butyl Stearate	=	F	=	=	=	E	

	NR	EPDM	SBR	IIR	NBR	UHMWPE	CR
Butylene	=	F	=	=	E	G	F
Butyraldehyde	F	G	F	G	=	E	F
Butyric Acid		F		G	=	E	
Butyric Acid Ethylester		E			=	E	
Butyric Anhydride				F	=	F	
Cadmium Acetate	G	E	G	E	G	E	=
Cadmium Cyanide		E				E	
Calcium Acetate	E	G	E	E	E	E	G
Calcium Aluminate		E		E	E	E	
Calcium Arsenate		E			E	E	
Calcium Bicarbonate		E			E	E	
Calcium Bichromate		E		E		E	
Calcium Biphosphate		E			E	E	
Calcium Bisulphate		E			E	E	
Calcium Bisulphite		=			E	E	
Calcium Bromide		E			E	E	
Calcium Carbide	=	G	=	E	=	E	E
Calcium Carbonate		E			E	E	
Calcium Chlorate		E			E	E	
Calcium Chloride	E	E	E	E	E	E	E
Calcium Chromate		G				E	
Calcium Cyanamide	F	G	F	G	F	E	G
Calcium Fluophosphate		E			E		
Calcium Fluoride		E			E	E	
Calcium Hydroxide	E	E	E	E	G	E	E
Calcium Hypochlorite Aq.	=	G	=	E	=	E	F
Calcium Hypochlorite 5% Aq.	=	F	=	E	=	E	F
Calcium Hypochlorite 20% Aq.	=	E	=	E	F	E	F
Calcium Methaphosphate		E			E	E	
Calcium Naphthenate	E	E	E	E	F	E	E
Calcium Nitrate	E	E	E	E	E	E	E
Calcium Oleate		E			E	E	
Calcium Oxyde		G				E	
Calcium Permanganate	=	G	=	G	=	E	=
Calcium Phosphate		E			E	E	
Calcium Salts	Refer to a specific one						
Calcium Silicate		E			E	E	
Calcium Stearate		E			E	E	
Calcium Sulphate		E			E	E	
Calcium Sulphide		E			E	E	
Calcium Sulphite					E	E	
Calcium Sulphydrate		E			E	E	
Caliche Liquors		E			E	E	
Cane Sugar Liquors	E	E	E		E	E	E
Caprylic Acid	G	E	G	E	F	E	E
Carbinol		F			F	E	
Carbitol		E			E	E	
Carbitol Acetate					=	E	
Carbolic Acid	=	=	=		=	E	F
Carbon Bioxide, gaseous		G			E	E	
Carbon Bisulphide		=			=	F	
Carbon Monoxide, gaseous		=			E	E	
Carbon Sulphide		=			=	F	
Carbon Tetrabromide	F	G	F	G	F	E	F
Carbon Tetrachloride	=	=	=		=	G	=
Carbon Tetrachloride	=	G	=	G	=	E	G
Carbon Tetrachloride (75%-25%)		=			=	E	
Carbon Tetrafluoride (Freon 14)		=			=	E	
Carbonic Acid	E	E	E		E	E	E
Casein		E			E	E	

	NR	EPDM	SBR	IIR	NBR	UHMWPE	CR
Caster Oil (Castor Oil)		E			F	E	E
Caustic Lime		G				E	
Caustic Potash 20%		E			G	E	
Caustic Potash 50%		E			=	E	
Caustic Soda 20% Aq.		E			E	E	
Caustic Soda 40% Aq.		G			=	E	
Caustic Soda 50% Aq.		G			=	E	
Caustic Soda 70% Aq.		=			=	E	
Cellosize	E	E	E	E	F		E
Cellosolve	E	E	E	E	F		E
Cellosolve Acetate	E	E	E	E	F		E
Cetylacetic Acid		E			E	E	
Cetylic Acid		G			E	E	
China Wood Oil, Tung Oil	=	G	=	G	=	E	=
Chlorinated Phenyl Base Askareis		=			=	G	
Chlorinated Hydrocarbons		=			=	G	
Chlorinated Solvents Dry		=			=	E	
Chlorinated Solvents Wet		=			=	E	
Chlorine (Wet)	=	E	=	E	=	E	E
Chlorine Bioxide		=			=	F	
Chlorine Gas Dry		F			=	F	
Chlorine Gas Wet		G			=	F	
Chlorine Water		G			=	E	
Chlorine Water Saturated		G			=	E	
Chloroacetic Acid		F			=	E	
Chloroacetone	G	E	G		=	E	G
Chlorobenzene	=	=	=		=	E	=
Chlorobenzol	F	G	F	G	F	E	
Chlorobromomethane		=			=	=	
Chlorobutadiene		=			=		
Chlorobutane		=			F	E	
Chlorocalcium		E			E	E	
Chlorodifluoromethane		=			=	E	
Chloroethylbenzene		=			=	G	
Chloroethyle		=			=	G	
Chloroethylene		=			=	E	
Chloroform	=	=	=	=	=	E	=
Chlorohydrogen (without water)		E			=	E	
Chloronaphtalene		=			=		
Chloropentane		=			=	E	
Chloropotassium		E			E	E	
Chloroprene Monomer		=			=		
Chloropropanone					=	E	
Chloropropanone	G	G	G	G	F	E	F
Chlorosulfonic Acid	=	=	=	=	=	=	=
Chlorotene	=	=	=	=	=	E	
Chlorotoluene	=	=	=	=	=	G	=
Chlorotrifluoroethylene (Ctfe)	=	=	=	=	G		=
Chlorylene		=			=	G	
Chromate		G				E	
Chromatic Acid 25%	F	G	F			E	
Chrome Acetate						E	
Chrome Alum						E	
Chrome Plating Solutions	=	G	=	=	=		=
Chrome Salts	Refer to a specific one						
Chrome Sulphate		E			E	E	
Chromic Acid 10% Aq.	=	E	=	G	=	E	=
Chromic Acid 25% Aq.	=	F	=	G	=	E	=
Chromic Acid 50% Aq.	=	=	=	G	=	F	=
Chromic Chloride	E	E	E	E	F		E

	NR	EPDM	SBR	IIR	NBR	UHMWPE	CR
Chromic Fluorides	E	E	E	E	F		E
Chromic Hydroxide	E	E	E	E	F		E
Chromic Nitrates	E	E	E	E	F		E
Chromic Oxide	E	E	E	E	F		E
Citric Acid, aqueous		E			E	E	
Coal Oil		=		=	E	E	
Coal Tar	=	=	=	=	E	E	G
Coal Tar Naphta		=			F	E	
Cobalt		E			E	E	
Cobalt Chloride	E	E	E		E	E	E
Cobalt Salts		E			E	E	
Cobalt-Nickel Plating Solutions						G	
Coconut Oil		=		G	E	E	
Cod Liver Oil	=	E	=		E	E	G
Coke Oven Gas	=	=	=	=	F	F	
Coloradol®		=			=	E	
Compressor Oil		=			E	E	
Copper Acetate		E			F	E	G
Copper Arsenale		E			E	E	
Copper Chloride	E	E	E	E	E	E	E
Copper Cyanide	E	E	E	E	E	E	E
Copper Fluoride		E			E	E	
Copper Hydrate		E		E	G	E	
Copper Hydroxide		E		E	G	E	
Copper Nitrate		E			E	E	
Copper Nitrate Aq.	E	E	E	E	F	E	E
Copper Nitrite		E			E	E	
Copper Sulphate		E			E	E	
Copper Sulphide		E			E	E	
Copper Vitriol		E			E	E	
Corn Oil	=	=	=	G	E	E	G
Cottonseed Oil	=	G	=	F	E	E	
Creosote (Wood or Coal Tar)		=			G	E	
Cresol	=	=	=		F	F	F
Cresol-Xylene (95%-5%)		=				E	
Cresol-Xylene-DDt (90%-5%-5%)		=				E	
Cresylic Acid	=	=	=	=	F	E	F
Cresylic Alcohol		=			F	G	
Crotonaldehyde		F		E	=	E	
Crude Oil		=			E	E	
Cryolite		E			F	E	
Cumene		=		=	F	E	=
Cuprammonium Sulphate		E			E	E	
Cupric Carbonate		E		E	G	E	
Cupric Chloride		E			E	E	
Cupric Cyanide		E			E	E	
Cupric Nitrate		E		E	E	E	
Cupric Nitrite		E			E	E	
Cupric Sulphate		E			E	E	
Cuprous Chloride		E				E	
Cuprous Cyanide		E				E	
Cyclobutane Oxide		=					
Cyclohexane	=	=	=	=	=	E	=
Cyclohexanol		G			G	E	
Cyclohexanone		F		=	=	E	=
Cyclohexene	=				=	E	
Cyclohexyl Amine	=				=	E	
Cyclopentane	=			=	=	E	
Cyclopentane Metyl	=					E	
Cyclopentanol	=				=	E	

	NR	EPDM	SBR	IIR	NBR	UHMWPE	CR
Cyclopentanone		=			=	E	
Cymene		=			=	E	
D.M.P. (Dimethyl Phenols)		=			=	F	
DDT and Kerosene		=			=	E	
DDT in Solvent		Refer to Solvent					
Decahydronaphtalene		=			=	G	
Decane	=	=	=		E	E	=
Decanol		G			E	E	
Decyl Alcohol		G			E	E	
Decyl Aldehyde					=	E	
Decyl Butyl Phtalate					=	E	
Dekalin		=			=	G	
Denaturated Alcohol		E			E	E	
Diacetone		E			=	E	
Diacetone Alcohol	=	G	=		=	E	E
Diamyl Amine					F	E	
Diamyl Naphtalene					=		
Diamyl Phenol					=	E	
Diamyl Phtalate		=			=		
Diamylene		=			=	E	
Dibenzyl Ether		F			=	E	
Dibenzyl Sebacate		G			=		
Dibromobenzene		=			=	E	
Dibutyl Amine	=	=	=		G	E	=
Dibutyl Ether	=	=	=	=	=	E	F
Dibutyl Ketone		G			=	E	
Dibutyl Phtalate (DBP)		E			=	E	
Dibutyl Sebacate (DBS)		F			=	E	
Dicalcium Phosphate	E	E	E	E	E	E	E
Dichloroacetic Acid	=	=	=	=	G	E	=
Dichloroacetic Acid Methylene		E			=	E	
Dichlorobenzene	=	=	=	=	F	E	F
Dichlorobenzol		=			=	E	
Dichlorobutane		=			=	E	
Dichlorodifluoromethane		=			=	G	
Dichloroethane		=		F	=	E	
Dichloroethyl Ether		=		=	=	E	
Dichloroethylene		=			=	F	
Dichloroexane		=			=	E	
Dichlorofluoromethane (Freon 21)					=	E	
Dichloroisopropyl Ether		=			=	E	
Dichloromethane		=		=	=	G	
Dichloropentane		=		=	=	E	
Dichloropropane		=		=	=	E	
Dichlorotetrafluoroethane		G			E	E	
Dicyclohexyl Amine					F	G	
Dieldrin in Xilene		=			=		
Dieldrin in Xilene and Water Spray		=			F		
Diesel Oil	=	=	=	=	E	E	G
Diethanol Amine					F	E	
Diethyl Amine		=			=	E	
Diethyl Benzene	=	=	=	=	F	E	
Diethyl Carbinol		G			E	E	
Diethyl Carbonate					=	E	
Diethyl Ethanol Amine		G			F		
Diethyl Ether	=	=	=	=	=	E	F
Diethyl Ketone		=		G	41	E	
Diethyl Malate							
Diethyl Malonate		G			=	E	
Diethyl Oxalate				=	=	E	

	NR	EPDM	SBR	IIR	NBR	UHMWPE	CR
Diethyl Phtalate		=			=	F	
Diethyl Sebacate		G		G	=	F	
Diethyl Sulphate		=			=	F	
Diethyl Triamine		=		E	G	F	
Diethylene Bioxide		=			=	F	
Diethylene Glycol	E	E	E	E	E	E	E
Diethylene Glycol Dimethyl Ether		=			=	F	
Diethylene Glycol Monoethyl Ether		E			E	F	
Diethylene Oxide		=		=	=	F	
Diethylene Triamine		G		E	=	F	
Difluorodichloromethane		F			F		
Difluoromonochloromethane		=			=	F	
Diglycol		E			E	E	
Dihexyl Phtalate		G			=	F	
Dihydroxyethyl Amine					F	F	
Dihydroxyethyl Ether					E	F	
Diisobutyl Ketone (DIBK)		=			=	F	
Diisobutylene		=	=	G	E	F	
Diisooctyl Adipate		=			=	F	
Diisooctyl Phtalate		=			=	F	
Diisodecyl Adipate		=			=	F	
Diisodecyl Phtalate		G			=	F	
Diisopropanol Amine		=			F		
Diisopropyl Amine		G			F	F	
Diisopropyl Benzene	=	=	=	=	=	=	=
Diisopropyl Ether		=			G	F	
Diisopropyl Ketone		E			=	F	
Dilauryl Ether		=			=	F	
Dimethyl Acetone		E			=	F	
Dimethyl Amine		G			=	F	
Dimethyl Aniline	=	F	=	=	=	F	=
Dimethyl Benzene		=			=	F	
Dimethyl Carbinol		G			E	F	
Dimethyl Ether	=	=	=	=	F	F	F
Dimethyl Formamide		G			=	F	
Dimethyl Furan		F			=	F	
Dimethyl Ketone		G			=	F	
Dimethyl Malonate							
Dimethyl Phenol		=			=	F	
Dimethyl Phtalate (DMP)		F			=	F	
Dimethyl Sulfoxide		=			=	F	
Dimethyl Sulphate		=			=	F	
Dimethyl Sulphide		=			=	F	
Dinitrobenzene		=			=	F	
Dinitrotoluene	=	=	=	=	=	=	=
Dinonyl Phtalate		E			=	F	
Diocyl Adipate		=			=	F	
Diocyl Amine		=			F		
Diocyl Maleate		E			=	F	
Diocyl Phtalate (DOP)		F			=	F	
Diocyl Sebacate		F			=	F	
Dioxane		G			=	F	
Dioxolane	=	F	=	=	=	F	
Dioxysuccinic Acid		E			E	F	
Dipentene		=			=	F	
Diphenyl		F			=	F	
Diphenyl Ether		=			=	F	
Diphenyl Oxyde		=			=	F	
Diphenyl Phtalate		=			=	F	
Dipropyl Amine		=			F		

	NR	EPDM	SBR	IIR	NBR	UHMWPE	CR
Dipropyl Ketone		=			=	F	
Dipropylene Glycol		E			E	F	
Disodium Phosphate		E			E	F	
Divinyl Benzene		=			=	F	
Dodecyl Benzene		=			=	F	
Dodecyl Toluene		=			=	F	
Dow Generai Weed Killer®					G	F	
Dowper®		=			=	F	
Dowtherm A		=			=	F	
Dowtherm E		=			=	F	
Drawin		F			=	F	
Drawinol		=			=	F	
Epichlorohydrin	=	F	=	=	=	F	
Epsom Salt		E			E	F	
Erdgas		=			G	F	
Ethanal		E			=	F	
Ethane	=	=	=	=	E	F	G
Ethanol		G			G	F	
Ethanol Amine		E			F	F	
Ether		=			=	F	
Ethyl Acetate	=	F	=	G	=	F	F
Ethyl Acetoacetate		G		G	=	F	
Ethyl Acrilate		F			=	F	
Ethyl Adipate		F			=	F	
Ethyl Alcohol	E	G	E	E	G	F	E
Ethyl Aldehyde		E		G	=	F	
Ethyl Aluminium Dichloride					=	F	
Ethyl Amine		F			=	F	
Ethyl Benzene	=	=	=	=	=	F	=
Ethyl Benzoate		E			=	F	
Ethyl Bromide	=	=	=	=	=	F	
Ethyl Butyl Acetate		G			=	F	
Ethyl Butyl Alcohol		E			E	F	
Ethyl Butyl Amine					F		
Ethyl Butyl Ketone		=		G	=	F	
Ethyl Butyraldehyde		G			=	F	
Ethyl Butyrate		E			=	F	
Ethyl Cellulose	G	G	G	G	G	F	G
Ethyl Chloride	G	=	G	E	=	F	G
Ethyl Chloroacetate		E			=	F	
Ethyl Dichloride		=			=	F	
Ethyl Diglycol		E			E	F	
Ethyl Ether		=		=	=	F	=
Ethyl Formate	=	G	=	G	=	F	G
Ethyl Glycol		E			E	F	
Ethyl Glycol Acetate		E			=	F	
Ethyl Hexanol		=			E	F	
Ethyl Hexoic Acid		=			=	F	
Ethyl Hexyl Acetate		=			=	F	
Ethyl Hexyl Alcohol		E			E	F	
Ethyl Isobutyl Ether		=			=	F	
Ethyl Ketone		F			=	F	
Ethyl Iodide		=			=	F	
Ethyl Mercaptan	=	=	=	=	=	F	
Ethyl Methyl Ketone		F			=	F	
Ethyl Oxalate	E	=	E	=	=	F	F
Ethyl Pentachlorobenzene		=			=	F	
Ethyl Phtalate		F			=	F	
Ethyl Propyl Ether		=			=	F	
Ethyl Propyl Ketone		=			=	F	

	NR	EPDM	SBR	IIR	NBR	UHMWPE	CR
Ethyl Silicate	G	G	G	F	F	E	E
Ethyl Sulphate		=			=	E	
Ethylene		G			E	E	
Ethylene Bromide		=			=	F	
Ethylene Chloride		=			=	E	
Ethylene Chloride-							
Ethylene Chlorobromide		=			=		
Ethylene Chlorohydrin	G	G	G		=	E	G
Ethylene Diamine	G	E	G		F	E	E
Ethylene Dibromide		=			=	F	
Ethylene Dichloride	=	=	=		=	E	=
Ethylene Glycol	E	E	E		E	E	E
Ethylene Oxide, gaseous		F			=	E	
Ethylene Trichloride		=			=	G	=
Ethyne		E			E	E	
Ex-Tri®		=			=	G	
Exxon 2380 Turbo Oil		=			G		
Fatty Acids	F	E	F		E	E	G
Feeding Oil		=			E	E	
Feran					=		
Ferric Bromide		E			E	E	
Ferric Chloride	E	E	E		E	E	E
Ferric Nitrate	E	E	E		E	E	E
Ferric Sulphate		E			E	E	
Ferrous Acetate		G			=	E	
Ferrous Ammonium Sulphate		E			E	E	
Ferrous Chloride	E	E	E	E	F		E
Ferrous Hydroxide		E			G	E	
Ferrous Sulphate		E			E	E	
Fish Oil		=			E	E	
Fluoboric Acid		G			=	G	
Fluorine		=			=	=	
Fluorobenzene		=			F		
Fluorolube®		G			E		
Fluosilicic Acid	E	G	E		=	E	E
Fluosilicic Acid	E	G	E		=	G	E
Formaldehyde, aqueous		G			F	E	
Formalin		G			F	E	
Formamide		E			G	E	
Formic Acid Dimethylamide		E			=		
Formic Acid, 99%		G			=	E	
Formic Acid, 10% Aq.		E			G	E	
Freon® 11		=			G	E	
Freon® 112		=			G		
Freon® 113		=			G		
Freon® 114		E			E	E	
Freon® 12		=			=	G	
Freon® 13					E	E	
Freon® 14		=			=	E	
Freon® 21					=	E	
Freon® 22		=				E	
Fuel Oil	F	F	F	F	E	E	G
Fumaric Acid	E		E		G	E	G
Furan	F	F	F	F	F	E	F
Furfural	F	F	F	G	F	E	F
Furfural Alcohol	F	F	F	G	F	E	F
Furfuryl Aldehyde		F			=	E	
Fusel Oil					E	E	
Gallic Acid	=	G	=	G	F	E	F

	NR	EPDM	SBR	IIR	NBR	UHMWPE	CR
Gasoline 100 Octane		=			E	E	
Gasoline 65 Octane		=			E	E	
Gasoline Aviation		=			E	E	
Gasoline Lead Free		=			E	E	
Gelatine		E			E	E	
Genantin		E			E	E	
Glauber Salt		E			E	E	
Gluconic Acid	E	E	E	E	F	E	E
Glucose	E	E	E	E	E	E	E
Glue (Animai)		E			E	E	
Glycerine	E	E	E	E	E	E	E
Glycerol		E		E	E	E	
Glycol		E			E	E	
Glycol Acid		E			=	E	
Glycol Acid Butylester		E			=	E	
Glycol Acid Monoethyl Ether		E			=	E	
Glycol Base							
Glysantin		E			E	E	
Grease	F	F	F	F	E	E	G
Green Sulphate Liquor	E	E	E	E	G	E	G
Ground Nut Oil		E			E	E	
Gypsum		E			E	E	
Halowax® Oil		=			=	E	
Harness Oil		=				E	
Heptacor in Petroleum Solvents		=			F		
Heptaldehyde		=		=	=		
Heptanal	F	E	F	E	F	E	G
Heptane	F	=	F	=	E	E	F
Heptane Carboxylic Acid		=		F	F	E	
Hexadecanoic Acid		G		G	E	E	
Hexahydrobenzene		=			=	E	
Hexahydrophenol		G			G	E	
Hexaldehyde	F	E	F	G	F	E	E
Hexaline		G			G	E	
Hexamethylene		=			=	E	
Hexane	F	=	F	=	E	E	=
Hexanol		G			E	E	
Hexene	F	F	F	F	G	E	G
Hexyl Alcohol	E	F	E	F	E	E	G
Hexyl Amine		=			=	E	
Hexyl Methyl Ketone	F	E	F	E	F	E	G
Hexylene					E	G	
Hexylene Glycol	E	E	E	E	F	E	E
HI-Tri®		=			=	G	
Hy Kit nr.6 - Water (33%-67%)					F	E	
Hydraulic Fluids Petroleum Base		=			E	E	
Hydraulic Fluids Phosphate Ester		G			=	E	
Hydraulic Fluids Polyalkylene		G			E	E	
Hydraulic Oil Mineral		=			E	E	
Hydrazine	F	F	F	G	F	E	G
Hydrazine Idrate		E			=	E	
Hydrobromic Acid	E	E	E	E	F	E	F
Hydrobromic Acid, aqueous		E			=	E	
Hydrocarbonic Acid		E			E		
Hydrochloric Acid 15% Aq.		E			F	E	
Hydrochloric Acid 33% Aq.		E			=	E	
Hydrochloric Acid 37% Aq.		G			=	E	
Hydrocyanic Acid	G	E	G	E	G	E	G
Hydrofluoric Acid 10% Aq.		E		G	=	E	
Hydrofluoric Acid 20% Aq.		E		G	=	E	

	NR	EPDM	SBR	IIR	NBR	UHMWPE	CR
Hydrofluoric Acid 75% Aq.		F		G	=	E	
Hydrofluoric Acid 98% Aq.		=		G	=	E	
Hydrofluosilicic Acid	F	G	F	E	=	E	F
Hydrogen Gas	G		G	E	E	E	E
Hydrogen Peroxide, 10% Aq.		E			=	E	
Hydrogen Peroxide, 30% Aq.		E			=	E	
Hydrogen Peroxide, 90% Aq.		G			=	E	
Hydrogen Sulphide		G			=	E	
Hydroquinone	G	E	G	=	F	E	=
Hydroxysuccinic Acid		E			E	E	
Hypochlorous Acid	=	G	=	G	=	E	=
Ink Oil Linseed Oil Base		G			G	E	
Insulating Oil		=			E	E	
Iron Acetate	F	G	F	G	F	E	G
Iron Chloride		E			E	E	
Iron Hydroxide		E			G	E	
Iron Sulphate		G			=	E	
Iron Sulphide		E			E	E	
Isoamyl Acetate	E	E	E	E	F	E	E
Isoamyl Alcohol	E	E	E	E	E	E	
Isoamyl Bromide	F	F	F	F	G	E	F
Isoamyl Butyrate	E	E	E	E	F	E	E
Isoamyl Chloride		=			=	G	
Isoamyl Ether					=	E	
Isoamyl Phtalate					=	G	
Isobutane	=	=	=	=	E	E	G
Isobutanol		E			E	E	
Isobutyl Acetate	=	E	=	E	F	E	E
Isobutyl Alcohol	G	E	G	E	G	E	E
Isobutyl Aldehyde	F	G	F	E	F	E	G
Isobutyl Amine	G	E	G	E	G	E	
Isobutyl Bromide	F	F	F	F	F	E	F
Isobutyl Butyrate		G				G	
Isobutyl Carbinol					E	E	
Isobutyl Chloride	=	=	=	=	G	E	=
Isobutyl Ether	=	=	=	=	F	E	F
Isobutylene	=	=	=	=	=	E	=
Isocyanates		=			=	G	
Isodecane		=			E	E	
Isodecyl Alcohol					E	E	
Isohexadecyl Alcohol					E	E	
Isononyl Alcohol					E	E	
Isooctadecyl Alcohol					E	E	
Isooctane	=	=	=	=	E	E	F
Isopentane	=	=	=	=	E	E	G
Isophorone		E			=	G	
Isoprene Monomer		=			E	E	
Isopropanol		G			E	E	
Isopropanol Amine					F	E	
Isopropyl Acetate	=	G	=	G	=	E	=
Isopropyl Alcohol	G	E	G	E	G	E	G
Isopropyl Amine	G	E	G	E	G	E	
Isopropyl Benzene	=	=	=	=	F	E	F
Isopropyl Carbinol		E			E	E	
Isopropyl Chloride	=	=	=	=	=	E	=
Isopropyl Ether	=	=	=	=	F	E	F
Isopropyl Toluene	=	=	=	=	F	E	F
Isotridecanol		G			E	E	
Isotridecyl Alcohol		G			E	E	
Jet Fueis (JP1 to JP5)		=			E	E	

	NR	EPDM	SBR	IIR	NBR	UHMWPE	CR
Kerosene	F	=	F	=	E	E	G
Kerosene-Xylene (95%-5%)		=			=	E	
Ketones	F	E	F	E	F	E	F
L.P.G.	Use L.P.G. Hoses Only						
Lacquer Solvents	=	=	=	=	=	E	=
Lacquers	=	=	=		=	G	=
Lactic Acid	E	G	E		E	E	E
Lactic Acid, aqueous		G			E	E	
Lactol		=			=	E	
Lasso®		E			E	E	
Lauryl Alcohol	E	E	E	E	E	E	
Lavender Oil	=	=	=	=	G	E	=
Lead Acetate	E	E	E	E	G	E	G
Lead Arsenale		E			E	E	
Lead Nitrate	E	E	E	E	E	E	E
Lead Sugar		E			F	E	
Lead Sulfamate	G	E	G	E	G	E	E
Lead Sulphate		E			E	E	
Lead Tetraethyle		=			=	E	
Light Oil Residual		=			E	E	
Ligroin		=			E	E	
Lime Sulphur					=	E	
Lime Water		E			=	E	
Lindane®		E			E		
Lindol		F			=	E	
Linoleic Acid	=	=	=	=	G	E	G
Linseed Oil	=	F	=	F	E	E	F
Liquid Soap		E			E	E	
Lithium Hydroxide	E	E	E	E	F		E
Iodine		=			=	E	
Lubricating Oils	F	=	F	=	E	E	G
Lye	G	E	G		E	E	G
Magnesium Acetate	E	E	E	E	G	E	E
Magnesium Ammonium Sulphate		E			E	E	
Magnesium Bicarbonate		E			E	E	
Magnesium Carbonate		=			E	E	
Magnesium Chloride	E	E	E	E	E	E	E
Magnesium Fluoride		E			E	E	
Magnesium Hydrate	G		G	E	G	E	
Magnesium Hydroxide	G	E	G	E	G		G
Magnesium Lye		E				E	
Magnesium Nitrate		E			E	E	
Magnesium Oxide		E			E	E	
Magnesium Phosphate		E			E	E	
Magnesium Sulphate		E			E	E	
Magnesium Thyosulphate		E			E	E	
Malathion 50% in Aromatic Solvents		=			=	E	
Maleic Acid	=	=	=	=	=	E	=
Maleic Acid Anhydride		E			E	E	
Maleic Acid Diethylester		E			=	E	
Maleic Acid Dimethylester		E			=	E	
Maleic Anhydride	=	G	=	G	=		=
Malic Acid, aqueous		E			E	E	
Malonic Acid Dimethylester		E			=	E	
Manganese Sulphate	G	E	G	E	G	E	E
Manganese Sulphite	G	E	G	E	E	E	E
Manganous Acid							
Mercurous (II) Acetate		E			E	E	
Mercurous (II) Sulphide		E			E	E	
Mercurous Chloride		E			E	E	

	NR	EPDM	SBR	IIR	NBR	UHMWPE	CR
Mercurous Cyanide							
Mercurous Nitrate	E	E	E	E	F	E	E
Mercury	E	E	E	E	E	E	E
Mercury (I) Chloride		E			E	E	
Mercury (I) Cyanide						E	
Mercury (I) Nitrate		E			E	E	
Mesityl Oxide		F			=	E	
Methacrylic Acid	E	E	E	E	F	E	E
Methaketone		F				E	
Methallyl Alcohol	E	E	E	E	E	E	
Methanal		G			=	E	
Methane	=	=	=	=	E	F	G
Methanol		F			F	E	
Methyl Acetate	=	G	=	G	=	E	G
Methyl Acetoacetate	=	=	=	=	G	E	E
Methyl Acetone	F	G	F	G	=	E	F
Methyl Acrylate	=	G	=	G	=	E	G
Methyl Alcohol	E	E	E	E	E	E	E
Methyl Aldehyde		G			F	E	
Methyl Allyl Acetate	F	G	F	G	F	E	F
Methyl Allyl Chloride	F	=	F	=	G	G	
Methyl Amine		G			F	E	
Methyl Amyl Acetate	G	G	G	G	F	G	F
Methyl Amyl Alcohol		G			E	E	
Methyl Amyl Carbinol					E	E	
Methyl Amyl Ketone		G			=	E	
Methyl Benzene	=	=	=	=	F	E	F
Methyl Bromide	=	=	=	=	G	F	=
Methyl Butanol		G			F	E	
Methyl Butanone		G			=		
Methyl Butyl Ketone	=	E	=	E	=	E	=
Methyl Carbitol					=	E	
Methyl Cellosolve	=	G	=	G	F	E	F
Methyl Chloride	=	F	=	F	=	F	=
Methyl Chloroacetate	E	E	E	E	F	E	E
Methyl Chloroformate	=	=	=	=	=	E	=
Methyl Cyanide		F		E	=	E	
Methyl Cyclohexane		=			=	E	
Methyl Cyclopentane	=	=	=			E	F
Methyl Dichloroacetate		E			=	E	
Methyl Ethyl Ketone (MEK)	G	E	G	E	=	E	F
Methyl Formate	=	G	=	G	=	E	G
Methyl Glycol		E			E	E	
Methyl Glycol Acetate		G			=	E	
Methyl Hexanol					E	E	
Methyl Hexanone	F	G	F	E	F	E	F
Methyl Hexyl Ketone		F			=	E	
Methyl Isobutyl Carbinol					G	E	
Methyl Isobutyl Ketone (MIBK)		F			=	E	
Methyl Isopropyl Ketone	=	G	=	G	=	E	=
Methyl Iodide		E			=		
Methyl Methacrylate	=	=	=	=	=	E	=
Methyl Oleate	=	G	=	G	=	E	=
Methyl Phenol		=			F	E	
Methyl Propyl Carbinol		G			F	E	
Methyl Propyl Ether	=	=	=	=	F	E	
Methyl Propyl Ketone					=	E	
Methyl Salicilate		G			=	E	
Methyl Styrol		=			=	E	
Methylene Bromide	=	=	=	=	=	E	=

	NR	EPDM	SBR	IIR	NBR	UHMWPE	CR
Methylene Chloride	=	=	=	=	=	E	=
Methylene Chlorobromide		=			=	=	
Mineral Oils	=	F	=	F	E	E	G
Mineral Spirits	F	F	F	=	E	E	G
Mirbane Oil		=			=	E	
Mobil XRM 206 A		=					
Molten Sulphur	G	G	G	G	F	E	
Monobutyl Ether		=			=	E	
Monochloroacetic Acid	E	E	E	E	F	E	E
Monochlorobenzene	=	=	=	=	F	E	=
Monochlorodifluoromethane						F	
Monochloroethylene		=			=	=	
Monochloromethane		=			=	G	
Monoethanol Amine		G			F	E	
Monoethyl Amine	E	E	E	E	F	E	E
Monofluorotrichloromethane		=			=	E	
Monohydroxibenzene		G			=	E	
Monoisopropanol Amine		G			F	E	
Monomethyl Ether		=			E		
Monovinyl Acetate		G			E		
Monovinyl Acetylene		G			E		
Motor Oil		=			E	E	
Mould Oil		=			G	E	
Muriatic Acid	E	G	E	G	=	E	F
Naphta	=	=	=	=	E	E	F
Naphtalene	=	=	=	=	F	E	F
Naphtene		=			=	E	
Naphtenic Acid	F	F	F	F	G	E	F
Natural Gas	G	=	G	=	E	E	E
Neohexane	F	F	F	F	E	E	F
Neu-Tri®		=			=	G	
Neutral Oil		=			E	E	
Nickel Acetate	E	E	E	E	G	E	G
Nickel Ammonium Sulphate		E			E	E	
Nickel Chloride	E	E	E	E	E	E	G
Nickel Nitrate	E	E	E	E	F	E	E
Nickel Plating Solutions					F	E	
Nickel Sulphate	E	E	E	E	E	E	E
Nickel Vitriol		E			E	E	
Nickelous Chloride		E			E	E	
Nicotine Bentonite					G	E	
Nicotine Salts						E	
Nicotine Sulphate		G			G	E	
Nitric Acid 10% Aq.		E			=	E	
Nitric Acid 20% Aq.		E			=	E	
Nitric Acid 40% Aq.		G			=	G	
Nitric Acid 60% Aq.		=			=	G	
Nitric Acid Fuming		=			=	=	
Nitrobenzene	=	=	=	=	F	E	=
Nitrogen Gas	E	E	E	E	E	E	E
Nitrogen Tetraoxide		F			=		
Nitromethane	G	G	G	G	=	E	F
Nitrooctane					=	E	
Nitropropane	=	G	=	G	=	E	=
Nitrosyl Chloride	=	E	=	E	E	E	
Nitrotoluol		=			=	E	
Nitrous Acid	E	E	E	E	F	E	E
Nitrous Gas		E			F	E	E
Nitrous Oxide		E			F	E	E
Nonanol		=			E	E	

	NR	EPDM	SBR	IIR	NBR	UHMWPE	CR
Nonenes	F	F	F	F	E	E	
Nonyl Alcohol	=	=			E	E	
Octachlorotoluene	=	=	=		=		=
Octadecanoic Acid	F	F	F	F	E	E	
Octane	=	=	=	=	E	E	F
Octanol		E			E	E	
Octene		=			E		
Octyl Acetate	=	E	=	E	F	E	E
Octyl Adipate		F			=		
Octyl Alcohol	G	F	G	G	G	E	G
Octyl Aldehyde	F	G	F	G	G	E	E
Octyl Amine	G	G	G	G	F	E	
Octyl Carbinol		E			E	E	
Octylene Glycol	E	E	E	E	E	E	
Oil, Petroleum		=			E	E	
Oleic Acid	=	=	=	=	F	E	=
Oleum	=	=	=	=	=	F	=
Orthodichlorobenzene		=			=	G	
Orthoxylene	=	=	=	=	F	E	F
Oxalic Acid	G	E	G	E	G	E	G
Oxygen	G	E	G	E	G	E	
Oxytoluene		=			F	E	
Ozone Gas		G			=	G	
Paint	F	G	F		G	E	
Paint Oil	Refer to Thinner						
Palatino® C		E			=	E	
Palm Oil	=	F	=	F	E	E	
Palmitic Acid	G	G	G	G	E	E	G
Paper Makers Alum		E			E	E	
Para San						E	
Paradichlorobenzene		=			=	G	
Paradichlorobenzol (Moth Crystals)		=			=	G	
Paraffin	=	=	=	=	E	E	G
Paraffin Oils		=			E	E	
Paraformaldehyde		E			G	E	
Paraxylene	=	=	=	=	F	E	F
Paris Green						E	
Peanut Oil	=	F	=	F	E	E	F
Pelargonic Acid	F		F	E	G	E	
Pentachloroethane	=	=	=	=	F	F	=
Pentachlorophenol		=			=	E	
Pentachlorophenol-Kerosene		=			=	E	
Pentane	=	=	=	=	E	E	G
Pentanol		G			E	E	
Pentanone	F	G	F	G	F	E	
Pentene		=			E	E	
Perchloric Acid	F		F		F	E	F
Perchloroethylene	=	=	=	=	G	G	=
Petrolatum	=	=	=	=	E	E	G
Petroleum Base		=			G	E	
Petroleum Crude	F	F	F	F	E	E	F
Petroleum Ether (Naphta)		=			E	E	
Petroleum Oils	F	F	F	F	E	E	
Phenol		=			=	E	
Phenolsulfonic Acid	E	E	E	E	F	E	E
Phenyl Amine		G			=	E	
Phenyl Benzene		=			=	E	
Phenyl Chloride	=	=	=	=	F	E	F
Phenyl Ethyl Ether	=	=	=		=	E	=
Phenyl Ethylene		=			=	E	

	NR	EPDM	SBR	IIR	NBR	UHMWPE	CR
Phenyl Hydrazine	E	G	F		=	G	F
Phenylformic Acid		F			F	F	
Phorone	=	F	=	F	=	F	=
Phosphate Esters		=			=	F	
Phosphoric Acid 20% Aq.		E			F	F	
Phosphoric Acid 50% Aq.		E			=	F	
Phosphoric Acid 70% Aq.		G			=	F	
Phosphoric Acid 85% Aq.		F			=	F	
Phosphoric Acid Ester		E			=	F	
Phosphoric Oxide Chloride		F			=	F	
Phosphorous Trichloride	=	=	=		=	F	=
Phtalic Acid		E			E	E	
Phtalic Acid Dibutylester		E			=	F	
Phtalic Anhydride						E	
Pickling Solution		=			=	F	
Pickling Solution	=	F	=	F	=	F	=
Picric Acid	G	E	G		E	E	E
Picric Acid Molten	G	G	G	G	G	E	G
Pine Oil	=	=	=	=	E	E	=
Pine Tar	=	=	=	=	E	G	G
Pinene	=	=	=	=	G	E	F
Piperidine	=	=	=	=	=	E	=
Pitch		=			G		
Plating Solutions (Chrome)		E					
Polybutyl Acrylate Latex		E			E	E	
Polyethylene Glycol	E	E	E	E	E	E	
Polyisocyanates		=			=		
Polypropylene Glycol	E	E	E	E	E	E	
Polyurethanes		G				E	
Polyvinyl Acetate Emulsion	=	E	=	E	=	E	G
Polyvinyl Alcohol		E			E		
Potassium Acetate	E	E	E	E	G	E	G
Potassium Bicarbonate	E	E	E	E	F	E	E
Potassium Bichromate	E	E	E	E	F	E	E
Potassium Biphosphate		E			G	E	
Potassium Bisulphate		E			E	E	
Potassium Bisulphite		E			E	E	
Potassium Borate		E			E	E	
Potassium Bromate		E			E	E	
Potassium Bromide	E	E	E	E	F	E	E
Potassium Carbonate	E	E	E	E	F	E	E
Potassium Chlorate	E	E	E	E	F	E	E
Potassium Chloride	E	E	E	E	E	E	E
Potassium Chromate	=	E	=	E	G	E	
Potassium Chromosulphate		E			E	E	
Potassium Cuprocyanide		E			E	E	
Potassium Cyanide	E	E	E	E	E	E	E
Potassium Fluoride	E	E	E	E	F	E	E
Potassium Hydrate		E		E	E	E	
Potassium Hydrogen Sulphate		E			E	E	
Potassium Hydroxide	G	E	G	E	F	E	F
Potassium Iodide		E			E	E	
Potassium Monosulphide		E			E	E	
Potassium Nitrate	E	E	E	E	E	E	E
Potassium Nitrite	E	E	E	E	F	E	E
Potassium Oxalate	E	E	E	E	F	E	E
Potassium Oxide		E			E	E	
Potassium Perchlorate	E	E	E	E	F	E	E
Potassium Permanganate, aqueous		E			=	F	
Potassium Peroxide Bisulphate		E			E	E	

	NR	EPDM	SBR	IIR	NBR	UHMWPE	CR
Potassium Persulphate		E			E	E	
Potassium Phosphate		E			E	E	
Potassium Pyrochromate		E			G	E	
Potassium Silicate	=	E	=	E	E	E	
Potassium Sulphate		E			E	E	
Potassium Sulphide		E			E	E	
Potassium Sulphite		E			E	E	
Potassium Thiosulphate		E			E	E	
Propane Gas		=			E	E	
Propanediol	E	E	E	E	F	E	
Propanetriol		E		E	E		
Propanol		E			E	E	
Propanone	G	E	G	G	=	E	
Propellor Oil		=					
Propenol		E			E	E	
Propergol JP1 - JP5		=			E	E	
Propionic Acid	E	E	E	E	F	E	E
Propionitrile	G	G	G	E	G	E	
Propyl Acetate	=	G	=	G	=	E	=
Propyl Alcohol	E	E	E	E	E	E	E
Propyl Aldehyde	F	G	F	G	=	E	F
Propyl Amine		F			=	E	
Propyl Chloride	=	F	=	F	F	E	F
Propyl Nitrate	=	G	=	G	=	E	=
Propylene	=	=	=	=	F	E	=
Propylene Diamine		=		E	F	E	
Propylene Dichloride	=	=	=	=	=	G	=
Propylene Glycol	E	E	E	E	F	E	E
Propylene Oxide		E			=	E	
Pydraul Hydraulic Fluids		G			=	G	
Pyranols 1467-1476		=			G	E	
Pyrene		=			=	F	
Pyridine	=	G	=	=	=	E	=
Pyroigneous Acid	=	G	=	G	=	E	G
Pyrolle		=			=	E	
Quenching Oil							
Rance Oil						E	
Rape Seed Oil		G			G	G	
Red Oil	F	F	F	F	E	E	G
Richfield A		=			=	G	
Richfield D		=			G	G	
Rosin Oil	=	F	=	F	E	E	
Rotenone and Water		E			G	E	
Round-Up		E			G		
Saccharose		E			E	E	
Salicylic Acid		E			E	E	
Sea Water	E	E	E	E	E	E	E
Sewage	E	E	E	E	E	E	G
Silica Gel						E	
Silicate Esters	=	=	=	=	G	E	E
Silicate Of Soda	E	E	E	E	E	E	
Silicone Grease	E	E	E	E	E	E	E
Silicone Oils	E	E	E	E	E	E	E
Silver Azotate		E			E	E	
Silver Cyanide	E	E	E	E	F	E	E
Silver Nitrate	E	E	E	E	G	E	E
Silver Salts		E			E	E	
Skelly Solvent		=			E	E	
Skydrol® Hydraulic Fluids		G			=	E	
Soap Oil					E	E	

	NR	EPDM	SBR	IIR	NBR	UHMWPE	CR
Soap Solutions	G	E	G	E	E	E	G
Soda Ash	E	E	E	E	E	E	E
Soda Caustic 20% Aq.		E			E	E	
Soda Caustic 40% Aq.		G			=	E	
Soda Caustic 50% Aq.		G			=	E	
Soda Caustic 70% Aq.		=			=	E	
Soda Lime	G	G	G	E		E	
Soda Niter		E		E	E	E	
Sodium Acetate	E	E	E	E	G	E	G
Sodium Aluminate	E	E	E	E	F	E	E
Sodium Benzoate	E	E	E	E	F	E	E
Sodium Bicarbonate	E	E	E	E	E	E	E
Sodium Bichromate	E	E	E	E	F	E	E
Sodium Biphosphate					E	E	
Sodium Bisulphate	G	G	G	E	E	E	
Sodium Bisulphite	G	G	G	E	E	E	
Sodium Bitartrate		E			E	E	
Sodium Borate		E			E	E	
Sodium Carbonate		G			E	E	
Sodium Chlorate		E			G	E	
Sodium Chloride		E			E	E	
Sodium Chlorite		E			=	E	
Sodium Chromate	E	E	E	E	F	E	E
Sodium Cyanide	E	E	E	E	E	E	E
Sodium Ethoxide					G	E	
Sodium Fluoaluminate					E	E	
Sodium Fluoride	E	E	E	E	F	E	E
Sodium Formate		G				E	
Sodium Hydrate		E		E	E		
Sodium Hydrogen Sulphide		E			E	E	
Sodium Hydroxide 20% Aq.		E			E	E	E
Sodium Hydroxide 40% Aq.		G			=	E	E
Sodium Hydroxide 50% Aq.		G			=	E	E
Sodium Hydroxide 70% Aq.		=			=	E	E
Sodium Hypochlorite	G	E	G	E	G	E	G
Sodium Iodide		E			E	E	
Sodium Methaphosphate		E			E	E	
Sodium Nitrate	G	E	G	E	G	E	G
Sodium Nitrite		E			E	E	
Sodium Oxalate	E	E	E	E	F	E	E
Sodium Perborate	G	E	G	E	G	E	G
Sodium Perchlorate	E	E	E	E	F	E	E
Sodium Peroxide, aqueous		F			G	E	
Sodium Phosphate	E	E	E	E	G	E	E
Sodium Pyrosulphite		E			E	E	
Sodium Silicate	E	E	E	E	E	E	E
Sodium Sulphate		E			E	E	
Sodium Sulphide		E			E	E	
Sodium Sulphite		E			E	E	
Sodium Sulphydrate		E			E	E	
Sodium Thyosulphate		E			E	E	
Soybean Oil	=	F	=	F	E	E	F
Spindle Oil		=			E	F	
Stannic Chloride	E	E	E	E	E	E	=
Stannic Sulphide		E			E	E	
Stannous Chloride		F		G	E	E	
Stannous Sulphide		E			E	E	
Starch		E			E	E	
Steam	Use Steam Hoses Only						
Stearic Acid	F	G	F	G	G	E	G

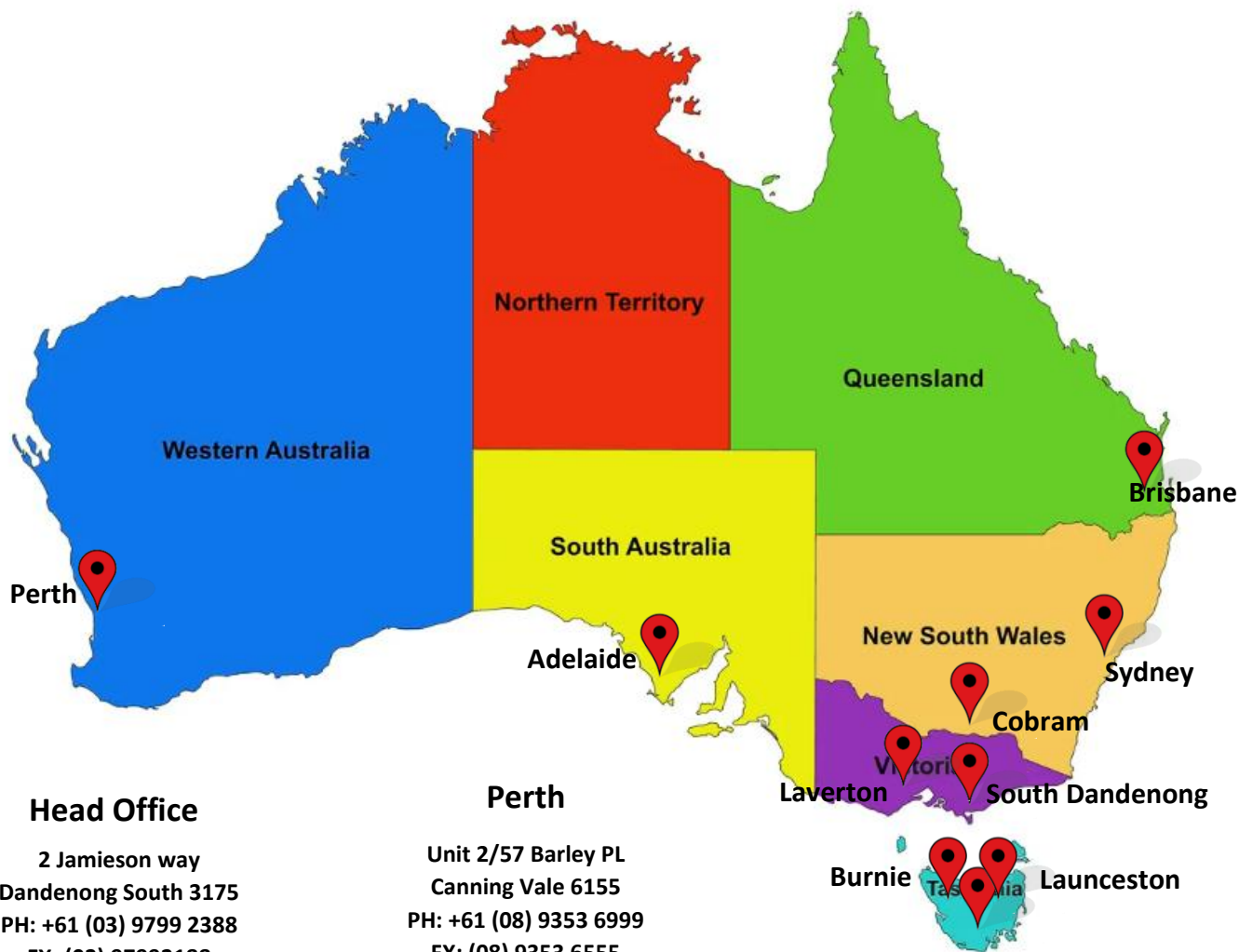
	NR	EPDM	SBR	IIR	NBR	UHMWPE	CR
Stoddards Solvent		=			E	E	
Styrene Monomer		=		=	=	E	
Sugar Solutions		E			E	E	
Sulphamic Acid	G	E	G	E	G	E	G
Sulphite Liquor		G			F		
Sulphonic Acid		=			=		
Sulphonitic Acid		=			=		
Sulphur		E			=	E	
Sulphur Chloride		F			=	E	
Sulphur Dioxide Dry		E			=	E	
Sulphur Dioxide Liquid		=			=	E	
Sulphur Hexafluoride		E			E		
Sulphur Molten		=			=	=	
Sulphur Trioxide Dry		=			=	=	
Sulphuric Acid Fuming		=			=	F	
Sulphuric Acid, aqueous 10% Aq.		E			F	E	
Sulphuric Acid, aqueous 20% Aq.		E			F	E	
Sulphuric Acid, aqueous 30% Aq.		E			=	E	
Sulphuric Acid, aqueous 50% Aq.		G			=	E	
Sulphuric Acid, aqueous 75% Aq.		F			=	E	
Sulphuric Acid, aqueous 95% Aq.		=			=	E	
Sulphuric Acid, aqueous 98% Aq.		=			=	F	
Sulphuric Ether		=			=	E	
Sulphurous Acid		E			=	E	
Sulphuryl Chloride		F			=	E	
Summer Oil		E			E	E	
Sunoco XS 820							
Tall Oil	F	F	F	F	E	E	G
Tallow	F	F	F	F	E	E	G
Tallow Acid		E			E	E	
Tanners Oil							
Tannic Acid, aqueous		E			G	E	
Tanning Liquors		=			E	E	
Tar		=			E	=	
Tar Oil		=			=	F	
Tartaric Acid, aqueous		E			F	E	
Terpineol		=			=	E	
Tertiary Butyl Alcohol	G	E	G	E	E	E	
Tetrabromoethane	=	=	=	=	=	E	=
Tetrachlorobenzene	=	=	=	=	F	E	F
Tetrachlorodifluoroethane		=			G		
Tetrachloroethane		=		=	=	F	
Tetrachloroethylene	=	=	=	=	=	G	=
Tetrachloromethane	F	F	F	F	F	E	F
Tetrachloronaphthalene	F	F	F	F	F	E	F
Tetradecanol		E			E	E	
Tetraethylene Glycol		E		E	E	E	
Tetrahydrofuran	F	G	F	G	F	E	F
Tetrahydronaphthalene		=		=	=	G	
Texaco 3450 Gear Oil	=	=	=	=	E	E	=
Texaco Capella A And Aa	=	=	=	=	E	E	G
Texaco Meropa 220 (No Lead)	=	=	=	=	E	E	G
Texaco Regal B	=	=	=	=	E	E	=
Texaco Uni-Temp Grease	=	=	=	=	E	E	G
Texamatic "A" Transmission Oil	=	=	=	=	E	E	G
Texas 1500 Oil	=	=	=	=	E	E	G
Therminol 44	G	G	G	G	E	E	E
Therminol 55	=	=	=	=	E	E	G
Therminol 66	E	E	E	E	F	E	E
Therminol Fr	E	E	E	E	F	E	E

	NR	EPDM	SBR	IIR	NBR	UHMWPE	CR
Therminol Vp-1, 60, 65	E	E	E	E	F	E	E
Thf	F	G	F	G	F	E	F
Thio Acid Chloride	E	E	E	E	G	E	E
Thiodiacetic Acid	E	E	E	E	F	E	E
Thioethanol	E	E	E	E	F	E	E
Thioglycolic Acid	E	E	E	E	F	E	E
Thiokol Tp-90B	=	E	=	E	=	E	G
Thiokol Tp-95	=	E	=	E	=	E	G
Thionyl Chloride	=	=	=	=	G	E	=
Thiopene		=			=	E	
Thiophene	=	=	=	=	G	E	=
Thiophosphoryl Chloride	E	E	E	E	F	E	E
Thiourea	E	E	E	E	F	E	E
Thorium Nitrate	E	E	E	E	F	E	E
Tin Ammonium Chloride	E	E	E	E	F	E	E
Tin Chloride	G	G	G	E	G	E	G
Tin Chloride, aqueous		G			E	E	
Tin Tetrachloride		G			E	E	
Tin Tetrachloride	E	E	E	E	E	G	G
Tincal		E			F	E	
Titanic Acid	E	E	E	E	F	E	E
Titanium Dioxide	E	E	E	E	F	E	E
Titanium Sulfate	E	E	E	E	F	E	E
Titanium Tetrachloride	=	=	=	=	G	G	=
Toluene	=	=	=	=	=	E	=
Toluene Bisodium Sulfite	=	E	=	E	=	E	G
Toluene Diisocyanate	=	G	=	G	=	E	=
Toluene Sulfonyl Chloride	=	=	=	=	G	E	=
Toluenesulfonic Acid	E	E	E	E	F	E	E
Toluidine	=	=	=	=	G	E	=
Toluol	=	=	=	=	=	E	=
Tolylaldehyde	E	E	E	E	F	E	E
Toxaphene®		=			G	G	
Transformer Oil	=	=	=	=	E		G
Transmission Oil "A"	=	=	=	=	E	G	F
Transmissions Fluids B		=			F	E	
Triacetin	F	E	F	E	G		G
Triaryl Phosphate	=	E	=	E	=	E	=
Tributoxy Ethyl Phosphate	G	F	G		=		=
Tributoxy Ethylsulfate	E	E	E	E	F	E	E
Tributyl Amine	G	G	G	G	G	E	G
Tributyl Citrate	E	E	E	E	F	E	E
Tributyl Mercaptan	=	=	=	=	=	E	=
Tributyl Phosphate		F		G	=	E	
Tributyl Phosphate	G	E	G	E	F	E	G
Tributylamine	=	=	=	=	G	E	E
Trichloroacetic Acid	F	G	F	G	G	E	=
Trichloroacetic Acid, aqueous		G			G	E	
Trichloroacetyl Chloride	=	=	=	=	G	E	=
Trichlorobenzene	=	=	=	=	F	G	=
Trichloroethane	=	=	=	=	=	E	=
Trichloroethanolamine	E	E	E	E	F	E	E
Trichloroethyl Phosphate (TCEF)		E			=	E	
Trichloroethylene	=	=	=	=	F	G	=
Trichlorofluoromethane		=			G	E	
Trichloromethane	=	=	=	=	=	E	=
Trichloronitromethane	E	E	E	E	F	E	E
Trichlorophenylsilane	=	=	=	=	E	E	G
Trichloropropane	F	F	F	E	G	E	F
Trichlorosilane	=	=	=	=	=	E	=

	NR	EPDM	SBR	IIR	NBR	UHMWPE	CR
Trichlorotrifluoroethane		=			G		
Tricresyl Phosphate	=	F	=	E	=	E	F
Tricresylphosphate	F	E	F	E	G	E	F
Tridecanol					E	E	
Tridecanol	E	E	E	E	E	E	G
Triethanol Amine	G	E	G	E	G	E	G
Triethanolamine		G		G	F	E	
Triethyl Amine		=			F	E	
Triethyl Phosphate	=	=	=	=	G	E	=
Triethylaluminum	=	=	=	=	=	E	=
Triethylamine	F	G	F	G	G	E	G
Triethylborane	=	=	=	=	=	F	=
Triethylene Glycol	E	E	E	E	E	E	E
Triethylenetetramine	E	E	E	E	F	E	E
Trifluoroacetic Acid	E	E	E	E	F	E	E
Trifluoroethane	=	=	=	=	=	E	=
Trifluoromethane	=	=	=	=	=	E	=
Trifluorovinylchloride	=	=	=	=	G	E	=
Trifluralin (Trefalin)	=	=	=	=	G	E	=
Triisopropylbenzylchloride	=	=	=	=	G	E	=
Trimethylamine	E	E	E	E	F	E	E
Trimethylbenzene	=	=	=	=	G	E	=
Trimethylborate	=	=	=	=	G	E	=
Trimethylpentane	=	=	=	=	E	E	G
Trinitroloeuene (Tnt)	=	=	=	=	=	E	G
Trinitrophenol		E			E	E	
Trinitrotoluene	=	=	=		=	=	G
Trioctyl Phosphate	F	E	F	G	G	E	E
Trioxybenzoic Acid		E			E		
Trioxypropane		E			E	E	
Triphenyl Phosphate		G			=	E	
Triphenyl Phosphate	F	F	F	G	G	E	=
Triphenylphosphite	E	E	E	E	F	E	E
Tripoly Phosphate	=	E	=	E	=	E	F
Tripotassium Phosphate	E	E	E	E	F	E	E
Trisodium Phosphate	E	E	E	E	F	E	E
Trixylil Phosphate		F			=	E	
Tung Oil	F	F	F	F	E	E	G
Tungsten Hexafluoride	=	E	=	G	=	E	=
Tungstic Acid	=	F	=	=	F	E	G
Turbine Oil	=	=	=	=	=	E	=
Turpentine	=	=	=	=	=	E	=
Ucon® Hydrolube Oils		=			E	E	
Uconol		E			E	E	
Undecanol	E	E	E	E	E	G	E
Undecylic Acid	=	=	=	=	G	E	=
Unsymmetrical Dimethyl Hydrazine		G			F		
Uran					G	E	
Uranium Hexafluoride	F	F	F	F	F	E	F
Uranium Sulfate	G	E	G	E	G	E	=
Urea	G	G	G	G	G	E	G
Urea, Water Solution	E	E	E	E	E	E	E
Uric Acid	E	E	E	E	F	E	E
V.M. & P. Naptha	=	=	=	=	E	E	E
Valeraldehyde	E	E	E	E	F	E	E
Vanadium Oxide	=	=	=	=	E	E	G
Vanadium Pentoxide	=	=	=	=	E	E	G
Varnish	=	=	=	=	G	E	=
Vaseline	=	E	=	E	E	E	E
Vegetable Oils	F	F	F	E	E	E	F

	NR	EPDM	SBR	IIR	NBR	UHMWPE	CR
Versilube F-50	E	E	E	E	E	E	E
Versilube F44, F55	=	E	=	=	E	G	E
Versilube®		E			E	E	
Vinegar	G	G	G	E	G	E	E
Vinegar	F	E	F	E	F	E	F
Vinyl Acetate	G	G	G	G	F	E	F
Vinyl Benzene	F	F	F	F	F	E	F
Vinyl Benzoate	=	=	=	=	G		=
Vinyl Carbinol		E			E	E	
Vinyl Chloride	F	F	F	F	F	E	F
Vinyl Cyanide	F	F	F	F	F	E	F
Vinyl Ether	F	F	F	G	F	E	=
Vinyl Fluoride	=	=	=	=	G	E	=
Vinyl Toluene	=	=	=	=	=	E	E
Vinyl Trichloride	F	F	F	F	F	E	E
Vinylidene Chloride	=	=	=	=	G	E	=
Vinylpyridine	=	=	=	=	G	E	=
Vitriol (White)	E	E	E	E	F	E	E
Vitriol Ether		=			F	E	
Vv-H-910	E	E	E	G	F	E	G
Wagner 21B Brake Fluid	E	E	E	G	F	E	G
Walnut Oil		E			E	E	
Wax	=	=	=	=	G	E	E
Wax Distillate						E	
Whiskey & Wines	E	E	E	E	E	E	E
White Liquor (Pulp Mill)	G	E	G	E	E	E	G
White Spirit		=			E	E	
Wolmar Salt	E	E	E	E	E	E	G
Wood Alcohol	E	E	E	E	E	E	E
Wood Oil	F	F	F	F	E	E	G
Xenon	E	E	E	E	E	E	E
Xylene	=	=	=	=	=	E	=
Xylenol		=			=	F	
Xylidenes	=	E	=	=	F	E	=
Xylidine		F		G	=	E	
Zeolites	E	E	E	E	E	E	E
Zinc Acetate	E	E	E	E	E	E	E
Zinc Ammonium Chloride	E	E	E	E	F	E	E
Zinc Carbonate	E	E	E	E	E	E	E
Zinc Chloride	E	E	E	E	E	E	E
Zinc Chromate	E	E	E	E	F	E	E
Zinc Cyanide	E	E	E	E	F	E	E
Zinc Diethyldithiocarbamate	E	E	E	E	F	E	E
Zinc Dihydrogen Phosphate	E	E	E	E	F	E	E
Zinc Fluorosilicate	E	E	E	E	G	E	F
Zinc Hydrosulphite	E	E	E	E	F	E	E
Zinc Naphthenate	=	E	=	E	=	E	=
Zinc Nitrate	E	E	E	E	E	E	=
Zinc Oxide	E	E	E	E	E	E	=
Zinc Phenolsulfonate	E	E	E	E	F	E	E
Zinc Phosphate	E	E	E	E	E	E	E
Zinc Salts	E	E	E	E	E		E
Zinc Silicofluoride	=	E	=	=	F	E	=
Zinc Stearate	E	E	E	E	F	E	E
Zinc Sulfide	E	E	E	E	F	E	E
Zinc Sulphate	G	E	G	E	E	E	E
Zirconium Nitrate	G	E	G	E	E	E	E

Notes



Head Office

2 Jamieson way
Dandenong South 3175
PH: +61 (03) 9799 2388
FX: (03) 97992188
Victoria@totalrubber.com.au

Perth

Unit 2/57 Barley PL
Canning Vale 6155
PH: +61 (08) 9353 6999
FX: (08) 9353 6555
Perth@totalrubber.com.au

Cobram

11 Dillion Street Cobram
Victoria 3644
PH: +03 8787-1137
Cobram@totalrubber.com.au

Sydney

107, Long Street, Smithfield NSW
2164 PH: +61 (02) 9933 7500
FX: (02) 9622 1753
Sydney@totalrubber.com.au

Burnie

12 Hopkinson Street
Burnie TAS, 7320
PH: +61 (03) 6431 6048
FX: (03) 6431 6496
Burnie@totalrubber.com.au

Brisbane

43 Dulacca Street
Acacia Ridge 4110
PH: +61 (07) 3711 3009
FX: (07) 3711 3010
Brisbane@totalrubber.com.au

Adelaide

9 Islington Court
Dudley Park SA 5008
PH: +61 (08) 8268 5110
FX: (08) 8268 5226
Adelaide@totalrubber.com.au

Hobart

467 Main RD
Glenorchy TAS 7010
PH: +61 (03) 6273 1155
FX: (03) 6273 1188
Hobart@totalrubber.com.au

Launceston

Unit 3, Merino Street
Kings Meadows 7249
PH: +61 (03) 6344 3322
FX: (03) 6344 3233
Launceston@totalrubber.com.au